

SAILING INSTRUCTIONS OLYMPIC CLASSES

31ST MARCH - 8TH APRIL, 2023



Spain 2023
World Cup
Series



MALLORCA / SPAIN 2023

SAIL
RACE
LIVE // T

www.trofeoprincesasofia.org

52 TROFEO
S.A.R. PRINCESA
SOFÍA

IBEROSTAR 
HOTELS & RESORTS



52 TROFEO S.A.R. PRINCESA SOFIA MALLORCA WORLD CUP SERIES - SPAIN

SAILING INSTRUCTIONS Olympic Classes

Notation [SP] or [NP] before a rule means:

[SP] denotes a rule for which a standard penalty may be applied by the race committee or technical committee without a hearing or a discretionary penalty applied by the International Jury with a hearing; (see SI 26.5).

[NP] denotes a rule that shall not be grounds for protests by a boat and the international jury may refuse to hold a hearing. This changes RRS 60.1(a)

1 RULES

- 1.1 The regatta will be governed by the rules as defined in *the 2021-2024 Racing Rules of Sailing* (RRS) and the rules established in the NoR item 1 RULES.
- 1.2 RRS B5 61.1a) delete the following sentence: "She shall also inform the race committee of her intention to protest as soon as practicable after she finishes or retires" This changes NoR 1.7
- 1.3 Only for iQFoil Class.
 - 1.3.1 Add new RRS 29.3 as follows:
When, at the warning signal, the course to the first mark is approximately ninety degrees from the true wind then,
(a) When at the starting signal the race committee identifies a board on the course side of the starting line, the race committee shall signal a general recall.
(b) If the race committee acts under SI rule 1.5(a) and the board is identified, she shall be disqualified without a hearing, even if the race is abandoned. The race committee shall hail or display her sail number, and she shall leave the course area immediately. If the race is restarted or resailed, she shall not sail in it.
 - 1.3.2 Add new rule B2 23.4:
The RFEV has approved the changes to the RRS described below in order to testing new rules as is specified in RRS 86.3
When, at the warning signal, the course to the first mark is approximately ninety degrees from the true wind, during the last 30 seconds before the starting signal:
a) all boards sailing inside the area formed by the starting line and the extensions of the lines from the first mark to the starting marks shall sail in the direction of the starting line;

- 2.10 [SP] ILCA 6 and ILCA 7 fleets must sail to the course area by leaving the yellow Security Mark (cylindrical with MAPFRE) on the port side.
- 2.11 [SP] ILCA 6 and ILCA 7 fleets must sail on the way back ashore leaving the yellow Security Mark on starboard side.



3 [DP] CODE OF CONDUCT

- 3.1 [NP] Competitors shall comply with any reasonable request from a regatta official.
- 3.2 Boats that are on a Course Area or passing through a Course Area to which they are not assigned shall remain clear of the area where boats are racing and any official boat.

4 COMMUNICATIONS WITH COMPETITORS

- 4.1 Notices to competitors will be posted on the official notice board located online at: www.trofeoprincesasofia.org.
- 4.2 Signals ashore will be displayed on the flagpole located near to the boat park in each venue.

- 4.3 When flag AP is displayed ashore, '1 minute' in race signal AP is replaced with the minutes indicated in the table below:

Class	Replace 1 minute with not less than
470, ILCA 6 and ILCA 7	60 minutes
Nacra 17	45 minutes
iQFOiL	30 minutes
49er, 49er FX and Formula Kite	20 minutes (35 minutes for course area 4)

- 4.4 [NP][DP] Flag D displayed ashore with one sound means 'The warning signal will be made not less than the minutes indicated in the table below after flag D is displayed or the scheduled time whichever is later.' Boats shall not to leave their berth until this signal is made. Flag D will be displayed together with a white flag showing the number of the assigned course area.

Class	...Minutes after flag D is displayed
470, ILCA 6 and ILCA 7	60 minutes
Nacra 17	45 minutes
iQFOiL	30 minutes
49er, 49er FX and Formula Kite	20 minutes (35 minutes for course area 4)

- 4.5 Change the course area on the water: When flag AP is displayed afloat, the course area may be changed. A race committee vessel will display flag L over the Class(s) flag and sail to the new course area.
- 4.6 For Formula Kite class, if Oscar Flag is displayed on the Race Committee vessel competitors may sail back shore to change the equipment. The next warning signal will be made not less than 30 minutes after Oscar flag was displayed; no sign in/sign out is required for this procedure.

- 4.7 Depending the intention of the RC about the format to be sailed for the iQFOiL Class (Course Racing, Slalom or Marathon) the RC will display the Format flag ashore at least 30 minutes before Warning Signal or afloat not later than Warning Signal.

Format	Flag
Slalom	Grey flag with white iQFOiL circle
Course Race	Red flag with burgundy iQFOiL circle
Marathon	Blue flag with IQFoil logo

5 CHANGES TO SAILING INSTRUCTIONS

- 5.1 Any change to the schedule of races will be posted by 21.00 on the day before it will take effect and any change to the sailing instructions will be posted before 09.00 on the day it will take effect.
- 5.2 When any SI addendum is changed, an updated version of it will be posted on the Official Notice Board as part of these sailing instructions.

6 FORMAT OF RACING FOR ILCA 6, ILCA 7, 470 Mixed, 49er, 49er FX, Nacra 17 and Formula Kite. (iQFoil see addendum E)

- 6.1 The format for ILCA 6, ILCA 7, 470 Mixed, 49er, 49er FX, Nacra 17 and Formula Kite consists of an opening series and a medal race or medal series. If the event is split into fleets, the opening series will be divided into a qualifying series and a final series.

6.2 Qualifying series

- 6.2.1 Boats will be assigned to fleets (yellow, blue or red if applicable) according with Addendum D of, as nearly as possible, equal size and ability. Initial assignments will be made by a seeding committee appointed by the race committee. Those assignments will be posted by 21:00 on the day before the first scheduled race for each event.
- 6.2.2 Boats will be reassigned to fleets after each day of racing, except if on the first day fewer than two races are completed by all fleets. If all fleets have completed the same number of races, boats will be reassigned on the basis of their ranks in the series. If all fleets have not completed the same number of races, the series scores for reassignment will be calculated for those races, numbered in order of completion, completed by all fleets. Reassignments will be made as follows:

Rank in series Fleet assignment (3 fleets)
First Yellow

Second Blue
Third Red
Fourth Red
Fifth Blue
Sixth Yellow
Seventh Yellow
and so on

First Yellow
Second Blue
Third Blue
Fourth Yellow
Fifth Yellow
Sixth Blue
and so on

Rank in series Fleet assignments (2 fleets)

If two or more boats have the same rank, they will be entered in the left column in the order of fleets in SI 6.2.1.

6.2.3 Assignments will be based on the ranking available at 2100 that day regardless of protests or requests for redress not yet decided.

6.2.4 If all fleets have not completed the same number of races by the end of a day, the fleets with fewer races will continue racing the following day until all fleets have completed the same number of races. All boats will thereafter race in the new fleets.

6.3 Final series:

6.3.1 A final series will be scheduled for each class with 4 (5 for 49er, 49er FX Classes and 7 for Formula Kite Men) or more qualifying series races completed.

6.3.2 Boats will be assigned to fleets (gold, silver or bronze if applicable) according to Addendum D on the basis of their ranks in the qualifying series. The gold Series fleets will have the number of boats shown in Addendum D. Boats with the best qualifying-series ranking will race all final-series races in the gold fleet, the next ones in the silver fleet and the next ones in the bronze fleet if applicable.

6.3.3 Any recalculation of final Series ranking after boats have been assigned to gold Series fleets will not affect the assignments except that a redress decision may promote a boat to a higher fleet.

6.4 Medal Race

6.4.1 A Medal Race will be scheduled for ILCA 6, ILCA 7, 470 Mixed, 49er, 49er FX and Nacra 17 with 3 or more opening series races completed.

6.4.2 The ten boats ranked highest in the opening series will be assigned to compete in the medal race.

6.4.3 Assignments to a Medal Race will be based on the ranking available at 0800 on the day of the medal race. The protest committee may extend the time limit.

6.5 Formula Kite Medal Series

- 6.5.1 Medal Series will be scheduled for Formula Kite with 7 or more opening series races completed.
- 6.5.2 The ten kiteboards ranked highest in the opening series will be assigned to compete in the Medal Series.
- 6.5.3 Assignments to Finals will be based on the ranking available at 0800 on the day of the final series. The protest committee may extend the time limit.
- 6.5.4 Formula Kite Finals will consist in Semi Final A, Semi Final B and Final.
- 6.5.5 "Semi Final A will consist in of boats ranked 3rd, 6th, 7 th, 10th , 11th, 14th from the Opening series and Semi Final B will consist of boats ranked 4th, 5th, 8th, 9th , 12th,13th from the Opening Series.
- 6.5.6 Boats ranked 1st and 2nd from the Opening Series progress directly to the Medal Series.
- 6.6 The number of fleets, number of races, races per day, and the types of races are shown in SI Addendum D.

7 SPARE

8 SCHEDULE OF RACES

- 8.1 The total number of races scheduled is shown in SI Addendum D.
- 8.2 The daily race schedule and the scheduled time of the warning signal for the first race are shown in SI Addendum C.
- 8.3 Races not sailed on the scheduled day may be sailed on a following day at the discretion of the race committee.
- 8.4 The opening series and the medal race or medal series, if any, will take place as detailed in SI Addendum C.
- 8.5 For all classes the opening series will be extended if three races have not been completed by 7 April and the medal race or medal series will be cancelled.
- 8.6 The warning signal for each succeeding race will be made as soon as practicable.
- 8.7 "To alert boats that a race or sequence of races will begin soon, the orange starting line flag will be displayed with one sound at least five (two for iQFoil Class) minutes before a warning signal is made".

8.8 On the last scheduled day of racing, no warning signal will be made after 16:00.

9 SPARE

10 COURSE AREAS

10.1 The course areas are shown in SI Addendum A.

10.2 For the medal races and medal series, three or four race courses areas will be used. The locations will be posted on the official notice board in accordance with SI 5.1.

11 THE COURSES

11.1 The diagrams in SI Addendum B show the courses, the course designations, the approximate angles between legs, the order in which marks are to be passed, and the side on which each mark is to be left.

11.2 The gate marks may be replaced by a single mark. In this case the remaining mark will be left on port.

12 MARKS

12.1 Course marks, will be as follows:

Course Area	Marks 1, 2, 3, 4 Offset, S1, S2 and S3
1	WHITE
2	BLUE
3	GREEN
4	RED
5	ORANGE
6	YELLOW
7	YELLOW
8	RED

12.2 The starting marks will be race committee vessels or inflatable marks.

12.3 The finishing marks will be a race committee vessel and pin end buoy both displaying a blue flag.

12.4 New marks, as provided in SI 15.1, will be black.

13 CLASS FLAGS

13.1 Class flags will be class insignia on the following background:

Class	Class Insignia	Background Colour
iQFOiL MEN	iQFOiL	White
iQFOiL WOMEN	iQFOiL	Light Blue
ILCA 7	ILCA	White
ILCA 6	ILCA	Green
470 Mixed	470	White
49er	49er	White
49er FX	FX	White
Formula Kite Men	Formula Kite	White
Formula Kite Women	Formula Kite	Yellow
Nacra 17 Mixed	Nacra 17	White

13.2 If a class is divided to fleets, the flag fleets will be as follow:

Qualification: Yellow, Blue and Red

Final: Yellow-Gold, Blue-Silver and Red-Bronze

14 THE START

14.1 The starting line will be between staffs displaying orange flags on the starting marks. For Formula Kite and iQFOiL Slalom, the starting line will be between staffs displaying orange flags on the starting marks or an inflatable black mark at the port end of the line.

14.2 [DP] A buoy may be attached to the race committee starting vessel anchor line just below keel depth. Boats shall not pass between this buoy and the race committee starting vessel at any time. This buoy is part of the race committee starting vessel ground tackle.

14.3 [DP] When a starting sequence is in progress, boats whose warning signal has not been made shall avoid the starting area. The starting area is defined as a rectangle 50 meters from the starting line and marks in all directions.

14.4 Formula Kite and iQFOiL start sequence will be as follows:

Minutes before starting signal	Visual signal	Sound signal	Means
3	Class or fleet flag	One	Warning signal
2	Uniform or black flag	One	Preparatory signal
1	Uniform or black flag removed	One long	1 minute
0	Class or fleet flag removed	One	Starting signal

Heat number, if applicable, will be displayed before or with the warning signal without sound. This changes RRS B3.

15 COURSE CHANGES

15.1 To change the next leg of the course, the race committee will (a) lay a new mark, (b) move the finishing line, or (c) move the leeward gate. When a new mark is laid, the original mark will be removed as soon as possible. When in a subsequent change a new mark is replaced, it will be replaced by an original mark.

15.2 Courses will not be shortened. This changes RRS 32.

16 THE FINISH

The finishing line will be between staffs displaying blue flags on the finishing marks.

17 TIME LIMITS AND TARGET TIMES

17.1 For opening series, time limits and target times are as follows:

Class	Time Limit	Mark 1 Time Limit	Finish Window	Target Time
470, ILCA 7 and ILCA 6	70	25	15	45
Nacra 17	50	20	10	30
49er and 49er FX	50	20	10	30
Formula Kite	20	6	6	12
iQFOiL Course race/slalom/long distance	21/6/90	10/2/-	5/3/30	16/5/90

17.2 For medal race or medal series, time limits and target times are as follows:

Class	Time Limit	Mark 1 Time Limit	Finish Window	Target Time
49er, 49er FX and Nacra 17	40	10	10	20
ILCA 6, ILCA 7 and 470	40	15	10	25
IQFOiL	10	-	4	6
Formula Kite	14	4	3	7

17.3 If no boat has passed Mark 1 within the Mark 1 Time Limit the race will be abandoned.

17.4 Boats failing to finish within the time stated in the Finish Window after the first boat sails the course and finishes will be scored Did Not Finish. This changes RRS 35, A4 and A5.

17.5 Not meeting the target time will not be grounds for request for redress. This changes RRS 60.1(b).

18 & 19 SPARE

20 [DP] EQUIPMENT AND MEASUREMENT CHECKS

Equipment inspection and equipment substitution will be conducted in accordance with the Equipment Regulations.

21 [DP] REPLACEMENT OF CREW

Substitution of competitors will not be allowed without prior written approval of the race committee and shall comply with any restrictions in the Notice of Race.

22 OFFICIAL BOATS

22.1 Official vessels will be marked as follows:

Equipment Inspection – White flag with letter “M”

First aid/Medical – White flag with Red Cross

Jury/Judges – Orange flag with “Jury”

Media – White flag with letter “P”

Race Committee – flags with Area Colour

Rescue or Course Marshals - White flag with letter “S”

- 22.2 Actions by official vessels or helicopters shall not be grounds for requesting redress by a boat. This changes RRS 60.1(b).

23 [DP] SUPPORT AND SPECTATOR BOATS

23.1 Addendum F – Support Team Regulations shall apply to all support vessels.

23.2 Addendum F – Support Team Regulations Parts 4 and 5 shall also apply to spectator vessels.

24 [DP] [NP] IDENTIFICATION AND ADVERTISING WHILE RACING

24.1 When provided by the organizing authority, boats or competitors shall carry, display or wear the following as instructed:

24.1.1 Bibs for all competitors. Bibs shall be returned after racing in the last day of the event and within the protest time limit to the race office. The penalty for broken this S.I. will be 2 points to the last race of the day. If not races have been sailed that day the penalty will be applied to the next race.

24.1.2 Coloured bibs for Event leaders (1st, 2nd, 3rd). Bibs shall be returned each day after racing and within the protest time limit to the race office. The penalty for broken this S.I. will be 2 points to the last race of the day. If not races have been sailed that day the penalty will be applied to the next race.

24.1.3 Bow number

24.1.4 Event advertising

24.1.5 Coloured ribbons for split fleets

24.1.6 [SP] Tracking Devices

25 SCORING (for iQFOiL scoring see Addendum E)

25.1 The Low Point System shall apply to all races. ILCA 6, ILCA 7, Nacra 17, 470, 49er and 49er FX will have a single Medal Race with double points and non-discardable. This changes RRS A4.

25.2 For all classes (except Formula Kite) when fewer than three opening series races have been completed, a boat's series score will be the total of her race scores. When three or more opening series races have been completed, a boat's series score will be the total of her race scores excluding her worst score.

- 25.3 For Formula Kite when from 4 to 6 races have been completed her worst scores will be excluded; when from 7 to 10 races have been completed her two worst scores will be excluded; when 11 or more races have been completed her three worst scores will be excluded.
- 25.4 A boat's score shall be calculated in accordance with RRS A2, except that medal race or medal series score(s) shall be not excluded.
- 25.5 A boat starting later than 4 minutes (1 minute for Formula Kite Class) after her starting signal will be scored Did Not Start without a hearing. This changes RRS A4 and A5.
- 25.6 RRS A5.2 is changed so that those scores are based on:
- (a) The number of boats assigned to compete in a single fleet series, or
 - (b) The number of boats assigned to the largest fleet in a split fleet qualification series, or
 - (c) The number of boats assigned to the fleet in the final series, medal race or medal series.
- 25.7 Three races are required to be completed to constitute a regatta.
- 25.8 If at the end of the qualifying series some boats have more race scores than others, scores for the most recent races will be excluded so that all boats have the same number of race scores.
- 25.9 The boats competing in the medal race or medal series shall be scored highest in the regatta. The boats competing in the Gold Fleet shall be scored higher in the regatta than boats competing in the Silver fleet and the boats competing in the silver fleet shall be scored higher than boats competing in the bronze fleet. This may not apply to a boat disqualified under RRS 5, 6 or 69.
- 25.10 RRS A8 is changed as follows:
- 25.10.1 "For boats competing in the medal race or medal series, ties in the regatta score are broken by applying RRS A8.2 to the medal race or medal series score(s). If a tie remains, ties in the regatta score are broken by applying RRS A8.2 to the opening series scores.
- 25.10.2 Ties in a split fleet final series are broken in accordance with RRS A8.2. Ties in a split fleet qualifying series or a single fleet opening series shall be broken in accordance with RRS A8.
- 25.11 "A boat assigned to compete in the medal race or medal series shall make a genuine effort to start, sail the course and finish. The penalty for a breach of this sailing instruction will be ranked the boat tenth (14 for Formula Kite) in the regatta. If there are two such boats, they will be ranked ninth (13th for Formula Kite) and tenth, (14th for Formula Kite) in order of their opening-series ranks, and so on. This changes RRS 2.
- 25.12 To request correction of an alleged error in posted race or series results, a boat shall lodge a score review through the website sailor's account.

Formula Kite Medal Series.

25.13 Semi Finals:

25.13.1 Semi Final A:

Consists of boats ranked 3rd, 6th, 7th, 10th, 11th, 14th from the Opening Series

A boat's rank relative to the other boats in their Semi-final shall be her score in race 1, the carried forward race i.e. 3rd = 1pt, 6th = 2pt, 7th = 3pt, 10th = 4pt, 11th = 5pt, 14th = 6pt
Boats complete 2 further races, so the series is scored from 3 races.

25.13.2 Semi Final B:

Consists of boats ranked 4th, 5th, 8th, 9th, 12th, 13th from the Opening Series

A boat's rank relative to the other boats in their Semi-final shall be her score in race 1 i.e. 4th = 1pt, 5th = 2pt, 8th = 3pt, 9th = 4pt, 12th = 5pt, 14th = 6pt
Boats complete 2 further races, so the series is scored from 3 races

25.14 Semi Final and Final races are not discardable.

25.15 The winner of each Semi Final will progress to the medal series, the remaining boats are Eliminated.

25.16 The boats ranked 2nd in each Semi Final shall have an equal final rank of fifth, 3rd ranked in each Semi Final shall have an equal final rank of 7th, and so on.

25.17 Final:

The winner of each Semi Final and the first and second ranked boats from the Opening Series shall progress to the Final.

The Final is a first to 3 wins format.

25.17.1 The first and second ranked boats in the Opening Series have 2 wins and 1 win respectively credited to them prior to the start of the first heat.

25.17.2 The winner shall be the first to 3 wins with the remaining boats ranked according to those with the highest number of wins, any ties are sorted by the finishing order in the last final heat.

25.18 If the Finals are not completed, boat's final rank shall be there Opening Series rank.

26 HEARING REQUESTS

26.1 Any request for a hearing (this includes protest, redress, reopening or any report under RRS 69 or concerning a support person) shall be lodged through the website sailor's account. Protests and requests for redress or reopening shall be delivered there within the appropriate time limit.

- 26.2 For each class, the protest time limit is 90 minutes (45 minutes for Formula Kite Class) after the last boat has finished the last race of the day or the race committee signals no more racing today, whichever is later.
- 26.3 Notices will be posted within 30 minutes of the protest time limit to inform competitors of hearings in which they are parties or named as witnesses. Hearings will be held in the protest room, located in Club building beginning at the time posted. Hearings may be scheduled to begin up to 30 minutes before the end of protest time.
- 26.4 A list of boats that have been penalized under Appendix P for breaking RRS 42 and under SI 26.5 will be posted.
- 26.5 For breaches of NoR 2.3 (national Flags) and the SIs marked [SP], the race committee may apply a standard penalty without a hearing. However, the race committee may protest a boat when they consider the standard penalty to be inappropriate. This changes RRS 63.1 and Appendix A5.

NoR / SI	STANDARD PENALTY
NoR 2.3	One point for each race of the day
S.I. 2.4	One point in the first race of the day
S.I. 2.5	One point in the last race of the day
S.I. 2.9	One point for each race of the day
S.I. 2.10	One point in the first race of the day
S.I. 2.11	One point in the last race of the day

- 26.6 On the last day of the qualifying series, opening series, or on the last scheduled day of racing, a request for reopening a hearing shall be delivered:
- (a) Within the protest time limit if the requesting party was informed of the decision on the previous day.
- (b) No later than 30 minutes after the requesting party was informed of the decision on that day.
- This changes RRS 66.
- 26.7 On the last day of the qualifying series or opening series, or on the last scheduled day of racing, a request for redress based on a jury decision shall be delivered no later than 30 minutes after the decision was posted. This changes RRS 62.2.

27 [DP] RADIO COMMUNICATIONS

A boat shall neither make radio transmissions while racing nor receive radio communications not available to all boats, except in an emergency or when using equipment provided by the race committee. This restriction also applies to mobile telephones.

28 [DP] TRASH DISPOSAL

As sailors, we seek to protect and restore our oceans and coastal waters. See RRS 47. Boats shall not intentionally put trash in the water. Trash may be placed aboard support and race committee boats.

29 PRIZES

29.1 Prizes will be awarded to the top 3 boats in each class.

29.2 TROFEO SAR PRINCESA SOFIA ABSOLUTE WINNER

The winner of each class of the 51 Trofeo SAR Princesa Sofia Mallorca is eligible for the Trophy as long as the following requirements are fulfilled:

- 29.2.1 Only the winner of each event is eligible for the Trophy, provided that in the event there is a minimum of 25 entries from 2 different continents and representing 8 different WS Member National Authorities.
- 29.2.2 The winner will be the boat with the lowest average points after dividing the total points in the regatta series by the number of race completed (including any discard).
- 29.2.3 If there is a tie between two or more boat, it will be broken by applying RRS A8.1, except that excluded scores shall be used. Any remaining tie shall be solved in favour of the boat with a higher number of entries in her class.

ADDENDUM A - COURSE AREAS



Not to scale.

COURSE	VHF CHANNEL
AREA 1	68
AREA 2	69
AREA 3	73
AREA 4	77
AREA 5	74
AREA 6	13
AREA 7	11
AREA 8	6

ADDENDUM B - COURSE ILLUSTRATIONS

I

Course: Inner Trapezoid

Signal	Mark Rounding Order
I2	Start - 1 - 4s/4p - 1 - 2 - 3p - Finish
I3	Start - 1 - 4s/4p - 1 - 4s/4p - 1 - 2 - 3p - Finish
I4	Start - 1 - 4s/4p - 1 - 4s/4p - 1 - 4s/4p - 1 - 2 - 3p - Finish

O

Course: Outer Trapezoid

Signal	Mark Rounding Order
O2	Start - 1 - 2 - 3s/3p - 2 - 3p - Finish
O3	Start - 1 - 2 - 3s/3p - 2 - 3s/3p - 2 - 3p - Finish
O4	Start - 1 - 2 - 3s/3p - 2 - 3s/3p - 2 - 3s/3p - 2 - 3p - Finish

L

Course: Windward/Leeward

Signal	Mark Rounding Order
L2	Start - 1 - 4s/4p - 1 - Finish
L3	Start - 1 - 4s/4p - 1 - 4s/4p - 1 - Finish
L4	Start - 1 - 4s/4p - 1 - 4s/4p - 1 - 4s/4p - 1 - Finish

LS

Course: Windward/Leeward With Slalom Finish

Signal	Mark Rounding Order
LS2	Start - 1 - 2s/2p - 1 - 2p - S1 - S2 - S3 - Finish
LS3	Start - 1 - 2s/2p - 1 - 2s/2p - 1 - 2p - S1 - S2 - S3 - Finish
LS4	Start - 1 - 2s/2p - 1 - 2s/2p - 1 - 2s/2p - 1 - 2p - S1 - S2 - S3 - Finish

LG

Course: Windward/Leeward

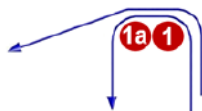
Signal	Mark Rounding Order
LG2	Start - 1 - 4s/4p - 1 - 4s - Finish
LG3	Start - 1 - 4s/4p - 1 - 4s/4p - 1 - 4s - Finish
LG4	Start - 1 - 4s/4p - 1 - 4s/4p - 1 - 4s/4p - 1 - 4s - Finish

LR

Course: Windward/Leeward

Signal	Mark Rounding Order
LR2	Start - 1 - 4s/4p - 1 - 4p - Finish
LR3	Start - 1 - 4s/4p - 1 - 4s/4p - 1 - 4p - Finish
LR4	Start - 1 - 4s/4p - 1 - 4s/4p - 1 - 4s/4p - 1 - 4p - Finish

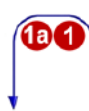
IA



Course: Same As Course I Except With Offset Mark 1A

Signal	Mark Rounding Order
IA2	Start - 1 - 1a - 4s/4p - 1 - 1a - 2 - 3p - Finish
IA3	Start - 1 - 1a - 4s/4p - 1 - 1a - 4s/4p - 1 - 1a - 2 - 3p - Finish
IA4	Start - 1 - 1a - 4s/4p - 1 - 1a - 4s/4p - 1 - 1a - 4s/4p - 1 - 1a - 2 - 3p - Finish

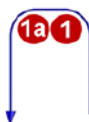
LGA



Course: Same As Course LG Except With Offset Mark 1A

Signal	Mark Rounding Order
LGA2	Start - 1 - 1a - 4s/4p - 1 - 1a - 4s - Finish
LGA3	Start - 1 - 1a - 4s/4p - 1 - 1a - 4s/4p - 1 - 1a - 4s - Finish
LGA4	Start - 1 - 1a - 4s/4p - 1 - 1a - 4s/4p - 1 - 1a - 4s/4p - 1 - 1a - 4s - Finish

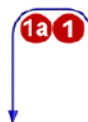
LA



Course: Same As Course L Except With Offset Mark 1A

Signal	Mark Rounding Order
LA2	Start - 1 - 1a - 4s/4p - 1 - 1a - Finish
LA3	Start - 1 - 1a - 4s/4p - 1 - 1a - 4s/4p - 1 - 1a - Finish
LA4	Start - 1 - 1a - 4s/4p - 1 - 1a - 4s/4p - 1 - 1a - 4s/4p - 1 - 1a - Finish

LRA



Course: Same As Course LR Except With Offset Mark 1A

Signal	Mark Rounding Order
LRA2	Start - 1 - 1a - 4s/4p - 1 - 1a - 4p - Finish
LRA3	Start - 1 - 1a - 4s/4p - 1 - 1a - 4s/4p - 1 - 1a - 4p - Finish
LRA4	Start - 1 - 1a - 4s/4p - 1 - 1a - 4s/4p - 1 - 1a - 4s/4p - 1 - 1a - 4p - Finish

52TROFEO S.A.R. PRINCESA SOFÍA IBEROSTAR HOTELS & RESORTS



Spain 2023
World Cup
Series



SAIL
RACE
LIVE
/IT

31ST MARCH TO 8TH APRIL
MALLORCA / SPAIN 2023

www.trofeoprincesasofia.org



MAIN SPONSOR

IBEROSTAR
HOTELS & RESORTS

ORGANIZERS



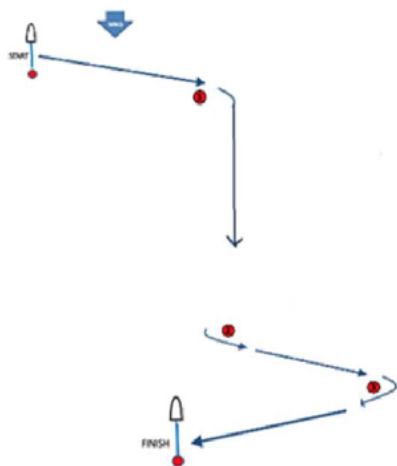
PARTNERS



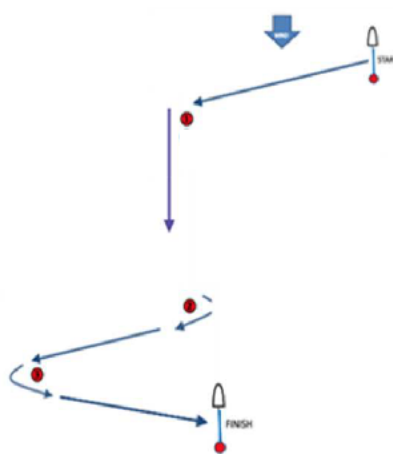
COLLABORATORS



FORMULA ONE VENUE

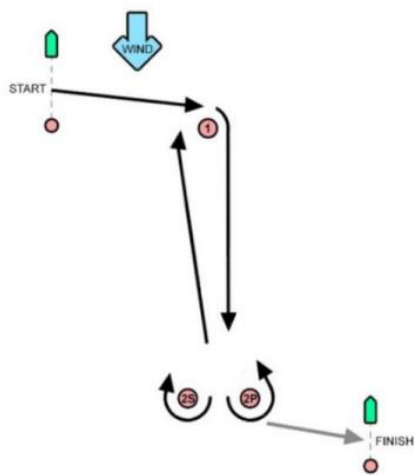


Signal	Mark rounding order
PD3	Start-1-2-3-Finish

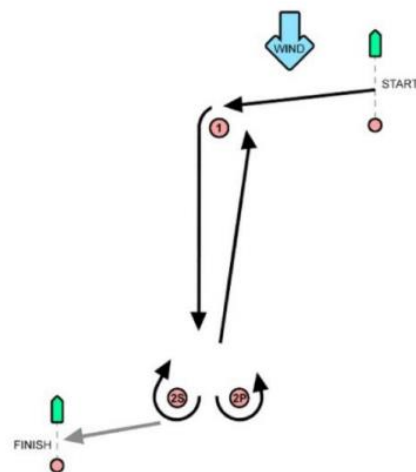


Signal	Mark rounding order
SD3	Start-1-2-3-Finish

MEDAL SERIES MR1 Course



Signal	Mark rounding order
PM1	Start-1-2S/2P-1-2P-Finish



Signal	Mark rounding order
SM1	Start-1-2S/2P-1-2S-Finish

52TROFEO S.A.R. PRINCESA SOFÍA IBEROSTAR HOTELS & RESORTS



Spain 2023
World Cup
Series



SAIL
RACE
LIVE

31ST MARCH TO 8TH APRIL
MALLORCA / SPAIN 2023

www.trofeoprincesasofia.org



MAIN SPONSOR

IBEROSTAR
HOTELS & RESORTS

ORGANIZERS



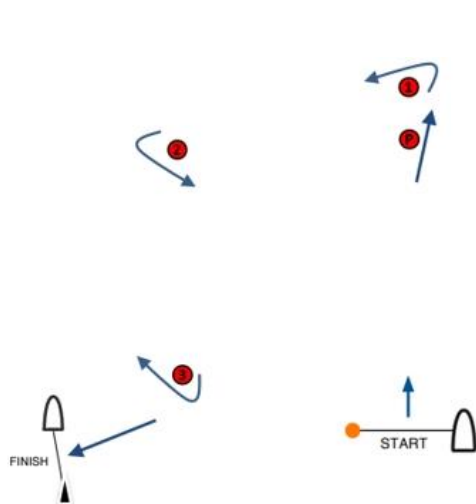
PARTNERS



COLLABORATORS

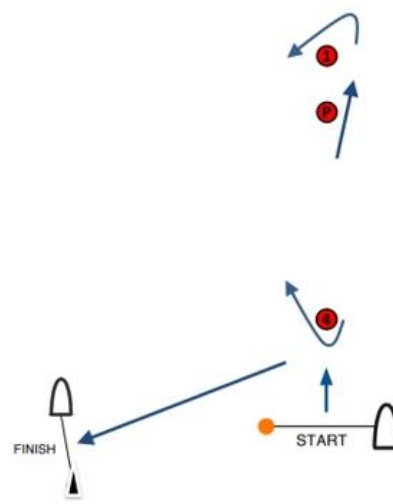


FORMULA KEY SYMBOLS



- B 1: Start - Pp - 1p - 2p - 3s - Finish
- B 2: Start - Pp - 1p - 2p - 3s - 2p - 3s - Finish
- B 3: Start - Pp - 1p - 2p - 3s - 2p - 3s - 2p - 3s - Finish

All distances and course angles are approximate.



- X 1: Start - Pp - 1p - Pp - 4s - Finish
- X 2: Start - Pp - 1p - Pp - 4s - Pp - 1p - Pp - 4s - Finish
- X 3: Start - Pp - 1p - Pp - 4s - Pp - 1p - Pp - 4s - Pp - 1p - Pp - 4s - Finish

All distances and course angles are approximate.

ADDENDUM C - SCHEDULE OF RACES

52 TROFEO S.A.R. PRINCESA SOFIA IBEROSTAR	Time of 1 st warning signal (hrs) and scheduled number races (#) by day						
WORLD CUP SERIES - SPAIN	Mon 3	Tue 4	Wed 5	Thu 6	Fri 7	Sat 8	
	TIME #	TIME #	TIME #	TIME #	TIME #	TIME	
iQFoil Men	1100 4	1100 4	1100 4	1100 3	1100 3	TBA	Finals
iQFoil Women	1100 4	1100 4	1100 4	1100 3	1100 3	TBA	Finals
470 Mixed	1200 2	1100 2	1340 2	1100 2	1330 2	TBA	Medal
Formula Kite Men		1100 4	1100 4	1100 4	1100 4	TBA	Finals
Formula Kite Women		1100 4	1100 4	1100 4	1100 4	TBA	Finals
ILCA 7	1200 2	1100 2	1100 2	1100 2	1100 2	TBA	Medal
ILCA 6	1200 2	1100 2	1100 2	1100 2	1100 2	TBA	Medal
49er		1100 3	1330 3	1100 3	1330 3	TBA	Medal
49er FX		1330 3	1100 3	1330 3	1100 3	TBA	Medal
Nacra 17 Mixed		1330 3	1100 3	1330 3	1100 3	TBA	Medal

The briefing for coaches and team leaders is scheduled every day at 09:15 at each venue except on Monday 3rd no briefing is scheduled. On Tuesday 4th a coaches briefing is scheduled only for iQFOIL, 470, ILCA 6 and ILCA 7 classes.

ADDENDUM D - FORMAT

See SI 6 and Addendum E for the description of formats; see SI 25 and Addendum E for the description of scoring systems.

Number of fleets, maximum number of boats in gold fleets and total number of races.

52 TROFEO S.A.R. PRINCESA SOFIA	Number of fleets	Number of Boats in the Gold Fleet	Total Number of Races Opening Series
iQFOiL Men	2	50%	18
iQFOiL Women	2	50%	18
470 Mixed	2	50%	10
Formula Kite Men	3	Equal Size	16
Formula Kite Women	2	50%	16
ILCA 7	3	Equal size	10
ILCA 6	2	50%	10
49er	3	25	12
49er FX	2	25	12
Nacra 17 Mixed	2	50%	12

In the case of an indivisible number of competitors Gold fleet shall be larger than Silver fleet.



- 5.5. If all fleets have not completed the same number of races by the end of a day, the fleets with fewer races will continue racing the following day until all fleets have completed the same number of races. All boards will thereafter race in the new fleets.

Final Series

- 5.6. Boards will be assigned to the Gold and Silver fleets on the basis of their ranks in the Qualifying Series.
- 5.7. The fleet lists shall be posted at least 2 hours before the first scheduled warning signal of the first race of the Final Series.
- 5.8. Any recalculation of Qualifying Series overall rankings after competitors have been assigned to Final Series fleets will not affect the assignments except that a redress decision may promote a competitor to a higher fleet.
- 5.9. For Sprint Slalom: When the class or fleet is split into heats, boards will be assigned to heats of, as nearly as possible, equal size and ability, following the principles outlined in SI Addendum E 5.2
- 5.10 For split fleet, the qualifying series will be extended if less than seven races have been completed, and then, the qualifying series will include all races sailed until the end of that day.

Medal Series

- 5.11. The first 10 overall ranked boards from the Opening Series shall advance to the Medal Series.
- 5.12 The Medal Series will consist in a Quarter Final, Semi Final and Grand Final.

Scoring

- 1.1. A minimum of 3 (three) races are required for a valid Championship.
- 1.2. A race will be scored as follows:
 - 1.2.1. A Course racing race will be scored as one race in a Series;
 - 1.2.2. A Sprint Slalom Round (each class or fleet has sailed one Heat) will be scored as one race in a Series. When the class or fleet is divided into the Heats, the boards will be scored as follows:

Finishing Position	Score	Finishing Position	Score
1	1	13	25
2	3	14	27
3	5	15	29
4	7	16	31
5	9	17	33
6	11	18	35
7	13	19	37
8	15	20	39
9	17	21	41
10	19	22	43
11	21	23	45
12	23	24	47

- 1.2.3. A Marathon race will be scored as two races.
- 1.2.4. When the Marathon is raced in the Qualifying series, the boards finishing position will be divided by the number of fleets in the class and applied to each of these two races.
Note: For example, an event of 90 competitors, where class have been split into two fleets, and where a board finishes in 70th position, the board's score will be recorded as 35th for both races.
- 1.2.5 When the Marathon is raced in a single fleet or in the Final series, the score will be the boards finishing position and applied to each of these two races

1.3. A competitor's series score will be the total of her race scores excluding her worst score(s) as follows:

1.3.1. When racing in a single fleet:

Opening Series Races	Discards	Comments
1-2	0	No discard
3-7	1	One worst score discarded
8-12	2	Two worst scores discarded
13-17	3	Three worst scores discarded

1.3.2. When racing in a split fleet

Qualifying Series Races	Discards	Comments
1-2	0	No discard
3-7	1	One worst score discarded in Qualifying Series
8-10	2	Two worst scores discarded in Qualifying Series
Final Series Races	Discards	Comments
1-2	0	No discard
3-7	1	One worst score in Final Series discarded
8 or more	2	Two worst scores in Final Series discarded

- 1.4. To request correction of an alleged error in posted results, a competitor shall complete a Scoring Review Form available online in website sailor's account.
- 1.5. For Qualification Series, scores are based on the number of competitors assigned to the largest fleet in that Series. This changes RRS A5.2.
- 1.6. When racing in heats, board that did not start, did not sail the course, did not finish, retired or was disqualified shall be scored points for the finishing place two more than the number of boards assigned to the largest heat in the Series. This changes RRS A5.2
- 1.7. If at the end of the qualifying series some boards have more race scores than others, scores for the most recent races will be excluded so that all boats have the same number of race scores.

- 1.8. If no race in Final Series is completed, the overall ranking in Qualification Series will be established and this shall count as the official result.
- 1.9. If no race in Finals is completed, the rankings in Opening Series will be established and this shall count as the official result.
- 1.10. When racing in multiple fleets, competitors assigned to Gold fleet will be ranked higher in the regatta than competitors assigned to Silver fleet.
- 1.11. Ties in a split fleet final series are broken in accordance with RRS A8.2. Ties in a split fleet qualifying series or a single fleet opening series shall be broken in accordance with RRS A8.
- 1.12. Competitors assigned to compete in the Medal Series will be ranked highest in the event except for a competitor disqualified from a Finals under RRS 5, 6 or 69.
 - 1.12.1. RRS Appendix A applies with the following changes:
 - 1.12.2. The Finals shall not be excluded neither will the Final races trigger any discards from results in Opening Series.
 - 1.12.3. The fourth to tenth overall ranked boards from the Opening Series shall sail in the Quarter Final race.
 - 1.12.4. The first 2 (two) ranked boards in the Quarter Final race and the second and third overall ranked board from the Opening Series shall advance to the Semi Final. The last 5 boards in the Quarter Final race shall be scored in positions 6th to 10th in the Event. If no Quarter Final is completed, boards will be ranked according to overall scores in Opening Series.
 - 1.12.5. The first 2 (two) ranked boards in the Semi Final race and the first overall ranked board from the Opening Series shall advance to the Grand Final. The last 2 boards in the Semi Final race shall be scored in positions 4th and 5th in the Event. If no Semi Final is completed, the winner of the Event is the first overall ranked board from Opening series, the second is the second overall ranked board from Opening series and the third is the third overall ranked board from Opening series, 4th and 5th will be ranked according to their positions in Quarter Final.
 - 1.12.6. The winner of the Grand Final race is the winner of the Event. The second ranked board shall be scored 2nd place and the third ranked shall be scored 3rd place in the Event. If no Grand Final is completed, the winner of the Event is the first overall ranked board from Opening series and 2nd and 3th place will be ranked according to their positions in Semi Final.
 - 1.12.7. If there is a series-score tie between two or more boards, it shall be broken in favour of the board with the better result in the previous stage.

(NP)(DP) ADDENDUM F.- Support Team Regulations

1. General

- 1.1. These Support Team Regulations (STR) shall apply from 09:00 on Saturday 3rd April until 18:00 on Saturday 8th April.
- 1.2. For the purposes of these regulations, a support vessel includes any boat that is under the control or direction of a person who is or may provide physical or advisory support to an athlete, including the gathering of data that may be used at a later time.
- 1.3. The Organizing Authority may inspect boats at any time to ensure that they comply with these regulations, and the person responsible for the boat shall facilitate such inspection.
- 1.4. An alleged breach of any of these regulations may be referred to the International Jury for a hearing. As a result of the hearing, the International Jury may instruct the Organizing Authority to withdraw accreditation and access rights from the offending party, with or without the option of substitution, either for a specified period or for the remainder of the competition. Note also, action may be taken under RRS 69.
- 1.5. The Organizing Authority may change these regulations at any time. Any changes will be posted on the Official Noticeboard and circulated to team leaders.
- 1.6. The Organizing Authority may, at its discretion, refuse to register support vessel not deemed to be suitable. Generally, open boats more than 4.0m and less than 7.5m in length and having minimal or no superstructure (cabin, coach house, bridge, etc) are considered suitable.
- 1.7. Coach boats and designated drivers shall be registered at the Regatta Office either before leaving the venue by water for the first time or by 18:00 on the day before the first race of the Event that it is supporting, whichever is earlier.
 - 1.7.1. Each boat shall be insured with valid third-party liability insurance with a minimum coverage of € 300.000 (or equivalent) per incident.
 - 1.7.2. Only an accredited coach may be a designated driver.
 - 1.7.3. The person registering the coach boat shall sign to confirm that:
 - he / she holds a valid insurance certificate showing proof of third-party liability coverage as required by 1.7.1;
 - the designated driver has a motorboat driving licence recognised by a national authority appropriate to that boat; and

- anyone who will be using a radio has an appropriate radio operation licence recognised by a national authority.

1.8. Coach boats shall be marked as follows:

1.8.1. The three-letter NOC code shall be clearly displayed on both sides of the boat in strongly contrasting colours at all times while afloat. The minimum height for the letters shall be 200mm. The letters will not be provided by the Organising Authority.

1.8.2. A rib identification sticker provided by the Organising Authority

2. Sailing Venue

- 2.1. Support vessel shall use the designated slipway/area for launching. Once launched, trailers shall be moved immediately to the trailer park or as otherwise directed by the Organizing Authority.
- 2.2. Only support vessels that will be registered will be allowed into the sailing venue.
- 2.3. When not in use, support vessels shall be appropriately berthed at the sailing venue in the allocated areas for coach boats for the entire time that these CBR apply.
- 2.4. Support Vessels shall not use the dinghy launching slipways or keelboat pontoons for any purpose whatsoever, including mooring, launching and retrieval, and loading and unloading of equipment.

3. Safety

3.1. Support Vessels shall carry on board:

- life jackets / buoyancy aid for all passengers and the driver (it is recommended that they are worn at all times when afloat);
- first-aid kit;
- VHF radio;
- device for making a sound signal;
- compass;
- adequate anchor and tackle for conditions and depth;
- tow rope (minimum 15m long and 10mm thick);
- operational engine kill cord (also known as a safety lanyard or automatic engine immobiliser);
- knife

3.2. It is strongly recommended that the kill cord is used at all times when the engine is running.

3.3. Support vessels shall never exceed maximum plated / certified passenger limits.

3.4. At all times, the registered driver(s) of a support vessel shall comply with directions given by a Race Official. In particular, this includes assisting in rescue operations when requested to do so.

3.5. Support vessels shall comply with local harbour and marina regulations, in particular speed limits.

4. General restrictions

4.1. The registered driver(s) of a coach boat will be responsible for the control of the boat at all times and will be held responsible for any inappropriate behaviour, dangerous actions or improper practices, or actions affecting the fairness or safety of competition.

4.2. Support vessels shall not leave any device, piece of equipment, buoy, marker or similar item permanently in the water. Temporary use of floating objects is allowed for current measurement. These objects shall be removed as soon as the measurement has been taken.

4.3. Support vessels should take particular care to minimise their wash when transiting the course areas.

5. Support Vessel Zone

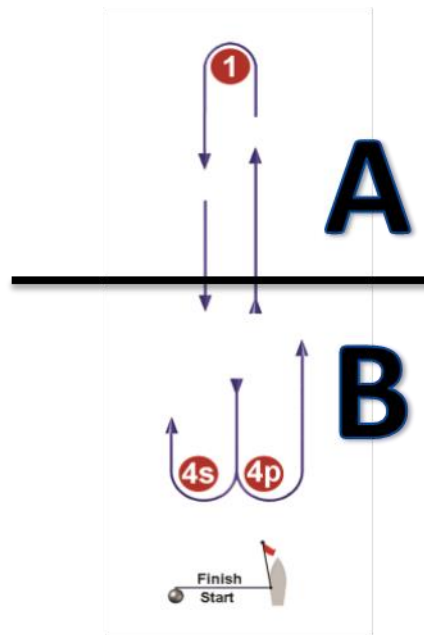
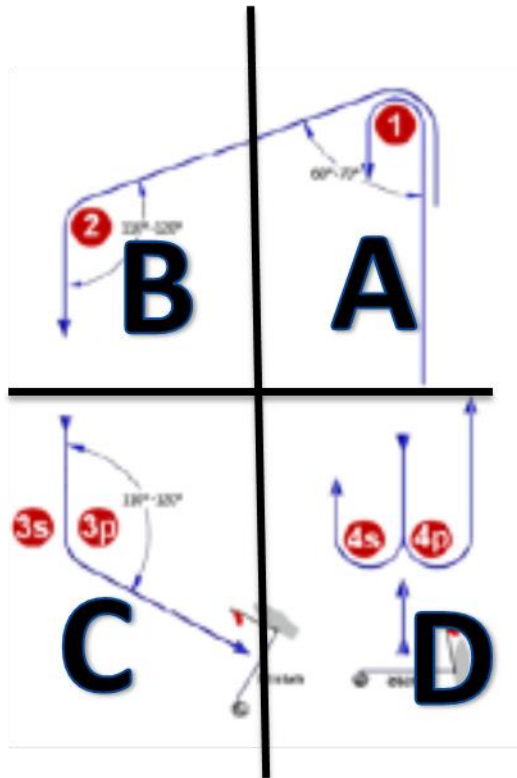
5.1. Support Vessel shall not be positioned:

- i. Closer than 50 metres of any boat racing
- ii. Within 50 meters of the starting line and marks from the time of the preparatory signal until all boats have left the starting area, or the race committee signals a postponement, general recall or abandonment.
- iii. Between any boat racing and the next mark of the course.
- iv. Between the inner and outer trapezoid courses when boats are racing on both courses.
- v. Within 50 meters of any mark of the course while boats are in the vicinity of that mark.
- vi. Within 50 meters of the finishing line and marks while boats are finishing.

5.2 In addition, support boats that are motoring above 5 knots shall remain at least 150 meters from any boat racing.

5.3 Additional restrictions apply to medal races and will be posted on the official notice board.

5.2 When the RRS 37 applies (Victor Flag) the search and rescue areas will be as below, follow instructions on VHF channel:



Addendum G "MARATHON RACE"

1. THE START
2. For Marathon races at the starting signal, a Rabbit (object or vessel displaying the Marathon discipline flag) will proceed at high and constant speed from the starting mark on the port end of the line to the race committee signal vessel on the starboard end. The starting line will be between the course side of the starting mark and the course side aftermost point of the Rabbit.
Marathon Course as follows:



Course: Start – 1(port) – PB (starboard)/RC (port) – 2 (port) – 1 (port) – PB (starboard)/RC (port) – 2 (port) – 1 (port) - Finish