

INTERNATIONAL 470 CLASS



SAILING INSTRUCTIONS

Organizing Authority (OA): Amici Velici Vigna di Valle A.s.d., in co-operation with the Italian 470 National Class Association, the International 470 Class Association and under the auspices of the Italian Sailing Federation (FIV).

1 RULES

- 1.1 The regatta will be governed by the Rules as defined in *The Racing Rules of Sailing (RRS)*.
- 1.2 No National Authority prescriptions will apply.
- 1.3 In all rules governing this championship:
 - a. Breaches of rules in the sailing instructions marked [NP] shall not be grounds for protests by a boat. This changes RRS 60.1(a).
 - b. For breaches of rules in the sailing instructions (SIs) marked [SP] a standard penalty may be applied by the Race Committee without a hearing, or a discretionary penalty applied by the International Jury with a hearing. This changes RRS 63.1 and A5.
- 1.4 If there is a conflict between languages the English text shall take precedence.
- 1.5 If there is a conflict between the Notice of Race (NoR) and these SIs, the SIs will take precedence. This changes RRS 63.7.
- 1.6 No Class Rule variations will apply.

2 [DP] [NP] IDENTIFICATION; CAMERAS AND ELECTRONIC EQUIPMENT

- 2.1 Boats may display bow numbers and advertising chosen and supplied by the Organizing Authority. If this rule is broken, World Sailing Regulation 20.9.2 applies.
- 2.2 Boats may be required to carry cameras, sound equipment or positioning equipment as specified by the Organizing Authority.

3 [DP] CODE OF CONDUCT

- 3.1 Competitors shall comply with any reasonable requests from a regatta official.
- 3.2 Competitors shall handle any boats or equipment provided by the Organizing Authority with proper care and seamanship, and in compliance with any written instructions.

4 COMMUNICATIONS WITH COMPETITORS

- 4.1 Notices to competitors will be posted on the official notice board located outside the clubhouse.
- 4.2 Signals made ashore will be displayed on the signal mast located in front of the clubhouse.
- 4.3 When a visual signal is displayed over a racing area or fleet flag, it applies to that racing area or fleet only. This changes the Race Signals preamble.
- 4.4 When flag AP is displayed ashore, '1 minute' is replaced with 'not less than 45 minutes' in race signal AP.

- 4.5** [SP] [NP] Flag D displayed ashore means: 'The warning signals will be made not less than 45 minutes after flag D is displayed or not before the scheduled time, whichever is later. 'Boats shall not leave the boat park until this signal is made'.
- 4.6** When flag Y is displayed ashore, RRS 40 applies at all times while afloat. This changes RRS Part 4 Preamble.

5 CHANGES TO SAILING INSTRUCTIONS

- 5.1** Any change to the SIs will be posted at least two hours before the scheduled time of the warning signal of the first race of the day it will take effect, except that any change to the schedule of the first races of a day will be posted by 20:00 on the day before it will take effect.
- 5.2** Any re-assignment of course areas can be done 45 minutes before flag D is displayed ashore or 45 minutes before flag AP is removed ashore.

6 [NP] CHAMPIONSHIP FORMAT

- 6.1** The Championship format will consist of a single Series with 11 races. At least 5 races are required to be completed to constitute the regatta series
- 6.2** The event will be sailed in one fleet including the Apprentice Masters, Masters, Grandmasters and Grand-grandmasters categories.
- 6.3** The number of boats on the starting line will be as defined below, except in difficult wind conditions:
- one fleet up to 48 boats,
 - two fleets from 49 to 90 boats,
 - three fleets for more than 90 boats.

At the discretion of the Organizing Authority the numbers assigned to any fleet may be amended.

7 SCHEDULE

7.1 Schedule of races:

3 August	Registration and measurement	09:00 – 18:00
4 August	Registration and measurement Races	09:00 – 12:00 13:00
5 August	Races	13:00
6 August	Races	13:00
7 August	Races Prize Giving	12:00 TBA

- 7.2** No more than three races can be sailed each day.
- 7.3** Races not sailed on the scheduled day may be sailed on following days at the discretion of the Race Committee.
- 7.4** The warning signal for each succeeding race will be made as soon as practicable.
- 7.5** After a long postponement, to alert boats that a race or sequence of races will begin soon, the orange starting line flag will be displayed with one sound for at least five minutes before a warning signal is displayed.
- 7.6** No warning signal will be given after 16:30 on the last day.

8 FLEET FLAG

8.1 Fleet flag will be:

	Yellow
--	--------

- 8.2** [DP] Category color ribbons will be provided at the check-out and must be displayed above the mainsail upper batten. These ribbons must be visible at all times on the water.

9 RACING AREA

9.1 Addendum A shows the approximate location of the racing area.

10 THE COURSES

10.1 The diagram in Attachment B show the course, the course designations, the approximate angles between legs, the order in which marks are to be passed, and the side on which each mark is to be left.

10.2 No later than the warning signal, the Race Committee signal boat will display the approximate compass bearing of the first leg.

10.3 Courses will not be shortened. This changes RRS 32.

11 MARKS

11.1 Marks 1, 4 (4s/4p) will be orange cylindrical buoys.

11.2 The starting marks will be the Race Committee starting boat at the starboard end and a boat or mark displaying an orange flag at the port end. See Addendum B.

11.3 The finishing marks will be a Race Committee boat at the port end displaying a blue flag and a buoy displaying a blue flag at the starboard end.

11.4 New marks as provided in SI 13.1 will be yellow cylindrical buoys.

11.5 A Race Committee boat signaling a change of course is a mark as provided in SI 13.2.

12 THE START

12.1 The starting line will be between an orange flag on the Race Committee boat and a yellow cylindrical buoy or an orange flag on pin-end-boat.

12.2 [DP] [NP] Boats whose warning signal has not been made shall avoid the starting area. The starting area is defined as 100 meters from the starting line and its extensions in both directions.

12.3 A boat starting later than 4 minutes after her starting signal will be scored DNS. This changes RRS A4 and A5.

13 CHANGE OF NEXT LEG OF THE COURSE

13.1 To change the next leg of the course, the Race Committee will

- (a) lay a new mark,
- (b) move the finish line, or
- (c) move the leeward gate.

When a new mark is laid the original mark will be removed as soon as practicable. When in a subsequent change a new mark is replaced, it will be replaced by an original mark.

13.2 Except at a gate, boats shall pass between the Race Committee boat signaling the change of course and the nearby mark, leaving the mark to port and the Race Committee boat to starboard. This changes RRS 28.1

14 THE FINISH

The finishing line will be between blue flags on the finishing marks.

15 PENALTY SYSTEM

15.1 RRS Appendix P, Special Procedures for RRS 42, will apply.

15.2 RRS P2.3 will not apply and RRS P2.2 is changed so that it will apply to any penalty after the first one.

16 TIME LIMITS AND TARGET TIMES

16.1 Time limits and target times for the first boat are as follows (in minutes):

	Time Limit	Mark 1 Time Limit	Finish Window	Race Target Time
Fleet race	75	20	15	45-50

16.2 If no boat has passed Mark 1 within the Mark 1 time limit, the race will be abandoned.

16.3 Boats failing to finish within the time stated in the Finish Window after the first boat sails the course and finishes will be scored Did Not Finish (DNF). This changes RRS 35, RRS A4 and RRS A5.

16.4 Failure to meet the target time will not be grounds for redress. This changes RRS 62.1(a).

17 PROTESTS

17.1 Protest forms are available from the protest information desk located at the race office. Protests and requests of redress or reopening shall be delivered there within the appropriate time limit.

17.2 For each fleet, the protest time limit is 60 minutes after the last boat has finished the last race of the day.

17.3 Notices will be posted within 30 minutes of the protest time limit to inform competitors of hearings in which they are parties or named as witnesses. Hearings will be held in the protest room beginning at the time posted. Hearings may be scheduled to begin up to 30 minutes before the end of the protest time.

17.4 Notices of protests by the Race Committee, Technical Committee or International Jury will be posted to inform boats under RRS 61.1(b).

17.5 A list of boats that have been penalized under Appendix P for breaking RRS 42 will be posted.

17.6 For the purpose of RRS 64.4(b) the 'authority responsible' is the 470 appointed event measurer.

17.7 Breaches of rules in the Notice of Race and Sailing Instructions marked [NP] will not be grounds for a protest by a boat. This changes RRS 60.1(a).

17.8 Penalties for breaches of the Equipment Regulations, Support Team Regulations, class rules, RRS 55 or rules in the Notice of Race and Sailing Instructions marked [DP] or [SP] should the case go to a hearing, are at the discretion of the International Jury. A boat may accept a discretionary penalty for the breaches stated above before a hearing concerning the same incident by completing a form available at the jury office.

17.9 For breaches of NoR/SI marked [SP], the race committee may apply a standard penalty without a hearing. A list of these breaches and the associated standard penalties will be posted on the official notice board. However, the race committee may protest a boat when they consider the standard penalty to be inappropriate. A boat that has been penalised with a standard penalty can neither be protested for the same incident by another boat nor can another boat request redress for this race committee action. This changes RRS 60.1, 63.1 and Appendix A5.

17.10 On the last racing day a request for re-opening a hearing shall be delivered

- within the protest time limit if the requesting party was informed of the decision on the previous day;
- not later than 30 minutes after the requesting party was informed of the decision on that day. This changes RRS 66.

17.11 On the last racing day, a request for redress based on the jury decision shall be delivered no later than 30 minutes after the decision was posted. This changes RRS 62.2.

17.12 Protests may be heard under RRS N1.4(b). The time limit for requesting a hearing by a full International Jury is 15 minutes after the parties were informed of the panel's decision.

18 SCORING

18.1 The Low Point System of RRS Appendix A shall apply to all races.

18.2 To request correction of an alleged error in posted race or series results, a boat may complete a scoring enquiry form available at the race office.

18.3 Discards

- (a) When fewer than 3 races have been completed, a boat's series score is the total of her race scores.
- (b) When 3 or more races have been completed, a boat's series score is the total of her race scores excluding her worst score.

18.4 There will be no separate scoring for each category of the Masters Cup.

18.5 There will be only an overall scoring.

19 [DP] [NP] SAFETY REGULATIONS

19.1 [SP] Check-out and check-in:

- (a) Before leaving to race on each scheduled racing day, a crew shall personally sign out on the required form located outside the clubhouse.
- (b) Within the protest time limit after returning ashore, a crew shall personally sign in on the required form located outside the clubhouse.

19.2 [SP] Boats not leaving the harbor for the day's races shall notify the race office as soon as possible.

19.3 [SP] A boat that retires from racing shall notify the Race Committee before leaving the racing area, or if that is not possible, shall notify the race office as soon as possible after returning ashore.

20 [DP] [NP] REPLACEMENT OF CREW OR EQUIPMENT

20.1 Substitution of competitors will not be permitted without prior written approval of the Race Committee and shall comply with any restrictions in the Notice of Race.

20.2 Substitution of damaged or lost equipment shall be made according the Event Measurement Regulations and Policies, Part A section 4.

21 [DP] [NP] EQUIPMENT AND MEASUREMENT INSPECTION

21.1 A boat or equipment may be inspected at any time for compliance with the class rules and SIs.

21.2 On the water, a boat shall act in accordance with any instruction by the Technical Committee to proceed immediately to a designated area for inspection.

22 OFFICIAL BOATS

22.1 Official boats will be marked as follows:

Official Boat	Flag
Race Committee	White Flag with black RC
Measurer	White Flag with black "M"
Jury	Yellow Flag with black "J"
Media / Press	White Flag marked P
Safety Boat	White Flag with red S

23 SUPPORT BOATS

See Addendum C Support Boat Regulation.

24 [DP] [NP] TRASH DISPOSAL

24.1 In addition to RRS 47, trash may be placed aboard support and official boats.

25 [DP] [NP] BERTHING

25.1 When berthed, boats shall be kept in their assigned place in the boat park. Boats shall not be moved from their parking spaces toward the launching beach until flag D is displayed and instructed to do so by the Beach Master.

26 [DP] [NP] RADIO COMMUNICATION

- 26.1 A boat shall neither make radio transmissions while racing nor receive radio communications not available to all boats, except in an emergency or when using equipment provided by the Race Committee. This restriction also applies to mobile telephones.

27 PRIZES

Prizes will be awarded as stated in Notice of Race

28 DISCLAIMER OF LIABILITY AND RISK STATEMENT

- 28.1 Competitors and support team members participate in the Championship entirely at their own risk and they are reminded of the provisions of RRS 3, Decision to Race. Sailing is by its nature an unpredictable sport and therefore involves an element of risk. By taking part in the event, each competitor agrees and acknowledges that:
- 28.1.1 They are aware of the inherent element of risk involved in the sport and accept responsibility for the exposure of themselves, their crew and their boat to such inherent risk whilst taking part in the event;
- 28.1.2 They are responsible for the safety of themselves, their crew, their boat and their other property whether afloat or ashore;
- 28.1.3 They accept responsibility for any injury, damage or loss to the extent caused by their own actions or omissions;
- 28.1.4 By participating in any race, they are satisfied that their boat is in good order, equipped to sail in the event and they are fit to participate;
- 28.1.5 The provision of a race management team, safety boats, judges and other officials and volunteers by the organizer does not relieve them of their own responsibilities;
- 28.1.6 The provision of safety boat cover is limited to such assistance, particularly in extreme weather conditions, as can be practically provided in the circumstances.
- 28.1.7 They will familiarize themselves with any venue/event specific risks, adhere to rules and information produced for the venue/event and they will attend any venue/event safety briefings.
- 28.2 The Organising Authority and all parties involved in the regatta organisation will not accept any liability for material damage or personal injury or death sustained in conjunction with or prior to, during, or after the regatta.

29 RIGHTS TO USE NAME AND LIKENESS

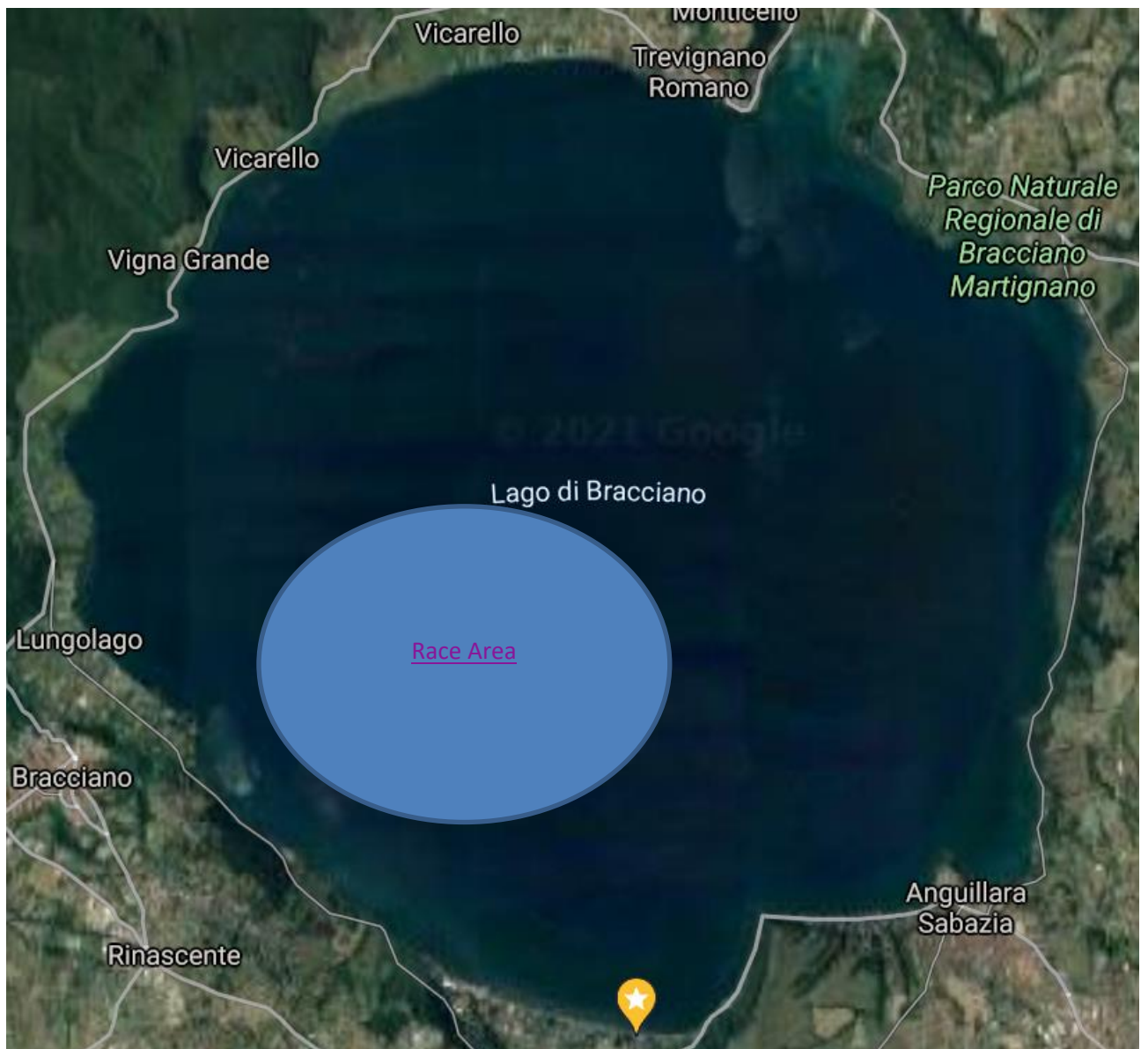
- 29.1 By participating in the regatta competitors automatically grant to the International 470 Class Association, the Organizing Authority and their sponsors, the right in perpetuity to make, use and show, from time to time at their discretion, any motion pictures and live, taped or filmed television and other reproductions of the athlete during the Championship, and of all his or her material related to the Championships, without compensation.

30 INSURANCE

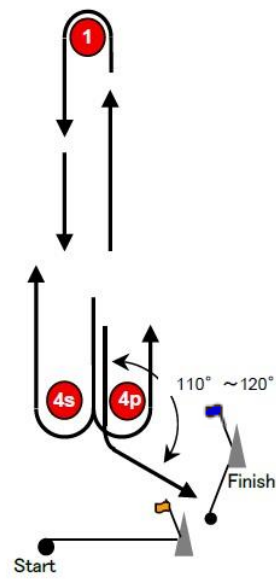
- 30.1 Each participating boat shall have valid third party liability insurance with a minimum cover 1.500.000 EUR per event or equivalent. A certificate of such insurance shall be shown during registration.

ADDENDUM A – RACING AREA

The racing area is presented below.



ADDENDUM B – THE COURSES



Course : Windward/Leeward

Signal	Mark Rounding Order
LR2	Start -1 -4s/4p -1 -4p -Finish

ADDENDUM C – SUPPORT BOAT REGULATIONS

1. General

- 1.1 These Support Boat Regulations (SBR) shall apply from 00:01 on the 3rd of August 2021 until 18:00 on 7th of August 2021.
- 1.2 For the purposes of these regulations, a support boat includes any boat that is under the control or direction of a person who is or may provide physical or advisory support to an athlete, including the gathering of data that may be used at a later time.
- 1.3 The OA may inspect boats at any time to ensure that they comply with these regulations, and the person responsible for the boat shall facilitate such inspection.
- 1.4 An alleged breach of any of these regulations may be referred to the International Jury for a hearing. As a result of the hearing, the International Jury may instruct the OA to withdraw accreditation and access rights from the driver or person in charge, with or without the option of substitution, either for a specified period or for the remainder of the competition. Note also, action may be taken under RRS 69.
- 1.5 The OA may change these regulations at any time. Any changes will be posted on the official notice board and circulated to team leaders.
- 1.6 The OA may, at its discretion, refuse to register support boats deemed to be unsuitable.
- 1.7 Support boats and designated drivers shall be registered at the regatta office either before leaving the venue by water for the first time or by 18:00 on the day before the first race of the event that it is supporting, whichever is earlier.
 - 1.7.1 Each boat shall be insured with valid third-party liability insurance with a minimum coverage of EUR 1.500.000 (or equivalent) per incident. The Organizing Authority is not responsible for verifying the status or validity of certificates.
 - 1.7.2 Only an accredited person may be a designated driver.
 - 1.7.3 The person registering the support boat shall confirm that:
 - a) a valid insurance certificate showing proof of third-party liability coverage as required by 1.7.1 has been obtained;
 - b) each designated driver has a motorboat driving license recognized by a national authority appropriate to that boat; and
 - c) anyone who will be using a radio has an appropriate radio operation license recognized by a national authority.
- 1.8 Support boats shall be marked with the applicable national sail letters (see RRS G1.1) clearly displayed on both sides of the boat in strongly contrasting colors at all times while afloat. The minimum height for the letters shall be 200 mm. The letters will not be provided by the OA.
- 1.9 Support boats shall display a numbered white flag provided by the OA against a deposit of EUR 20.

2. Sailing venue

- 2.1 Support boats shall use the designated slipway/area for launching. Once launched, trailers shall be moved immediately to the trailer park or as otherwise directed by the OA.
- 2.2 Only registered support boats will be allowed into the sailing venue.
- 2.3 When not in use, support boats shall be appropriately berthed at the sailing venue in the allocated areas for support boats for the entire time that these Support Boat

Regulations apply.

- 2.4 Support boats shall not use the dinghy launching slipways or keelboat pontoons for any purpose whatsoever, including mooring, launching and retrieval, and loading and unloading of equipment.

3. Safety

- 3.1 Support boats shall carry on board:
- life jackets / buoyancy aid for all passengers and the driver
 - first-aid kit;
 - VHF radio;
 - device for making a sound signal;
 - compass;
 - adequate anchor and tackle for conditions and depth;
 - tow rope (minimum 15m long and 10mm thick);
 - operational engine kill cord (also known as a safety lanyard or automatic engine immobilizer);
 - hand pump or bailer
 - knife; and
 - any additional safety equipment required by local maritime law.
- 3.2 It is recommended that life jackets be worn at all times when afloat.
- 3.3 When flag Y is displayed on the Signal Boat or ashore, Rule 40 applies also for coach boats.
- 3.4 **It is strongly recommended that the kill cord is used at all times when the engine is running.**
- 3.5 The maximum plated / certified passenger limits for the boat shall never be exceeded.
- 3.6 Team leaders are responsible for overseeing the safe operations of their support boats on the water, including knowledge of who is afloat and ensuring their safe return to the venue.
- 3.7 At all times, the registered driver(s) of a support boat shall comply with directions given by a race official. In particular, this includes assisting in rescue operations when requested to do so.
- 3.8 When the race committee displays flag V with repetitive sounds and/or broadcasts "Code Flag Victor" on the designated VHF Channel 73 all registered support boats shall comply with any instruction given by the race committee or the OA as assistance / rescue boats.
- 3.9 Support boats shall comply with local harbor and marina regulations, including speed limits.

4. General restrictions

- 4.1 The registered driver(s) of a support boat will be responsible for the control of the boat at all times and will be held responsible for any inappropriate behavior, dangerous actions or improper practices, or actions affecting the fairness or safety of competition.
- 4.2 Support boats shall not leave any device, piece of equipment, buoy, marker or similar item permanently in the water. Temporary use of floating objects is allowed for current measurement. These objects shall be removed as soon as the measurement has been taken.



the boat the world sails

- 4.3 Support boats should take particular care to minimize their wash when transiting the course areas.

5. Racing area restrictions

- 5.1 Support boats shall stay outside areas where boats are racing from the time of the preparatory signal for the first fleet to start until all boats have finished or the race committee signals a postponement, general recall or abandonment.
- 5.2 During any starting sequence, support boats shall stay at least 50 meters to leeward of the starting line and its extensions.
- 5.3 Support Boats shall not be positioned:
- a) closer than 100 meters of any boat racing.
 - b) within 100 meters of the starting line and marks.
 - c) between any boat racing and the next mark of the course.
 - d) between the inner and outer trapezoid courses.
 - e) within 50 meters of any mark of the course while boats are in the vicinity of that mark.
 - f) within 50 meters of the finishing line and marks while boats are finishing.
- 5.4 In addition, support boats that are motoring above 5 knots shall remain at least 150 meters from any boat racing.
- 5.5 When a race committee or jury member instructs a support boat to move further from the course area, the support boat shall do so immediately.

ADDENDUM D – STANDARD PENALTIES

6. SIGNALS MADE ASHORE	
Leaving when flag D is not displayed ashore – SI 4.6, 4.7	One point scoring penalty in her first race of the day.
19. SAFETY REGULATIONS	
No Sign Out - SI 19.1(a)	One point scoring penalty in her first race of the day
No Sign In - SI 19.1 (b)	One point scoring penalty in her last race of the day
Not notifying the race office when not leaving the shore for the day's races – SI 19.2	One point scoring penalty in her closest sailed race.
Not notifying the race office when retiring from a race – SI 19.3	One point scoring penalty in her closest sailed race.