



21st-24th September 2018

SAILING INSTRUCTIONS

1. RULES

- 1.1. The regatta will be governed by the rules as defined in The Racing Rules of Sailing (RRS).
- 1.2. In all rules governing this regatta;
 - 1.2.1. [SP] denotes a rule for which a standard penalty may be applied by the Race Committee without a hearing or a discretionary penalty applied by the International Jury with a hearing. This changes RRS 63.1 and A5; and
 - 1.2.2. [NP] denotes a rule that shall not be grounds for protests by a boat. This changes RRS 60.1(a).
- 1.3 The National Authority Prescriptions that will apply are as below.

RRS 67 DAMAGES

Liability for damages arising from a breach of a 'rule' defined in the Racing Rules of Sailing shall not be connected with a penalty taken by a boat involved in the incident, or a decision made by the protest committee or the Appeals Committee.

RRS 91

1. When an organizing authority of an international event held in Japan intends to appoint an international jury under rule 91(b), it shall obtain approval from JSAF before the event under rule N1.1, except World Sailing events or when the international jury is appointed by World Sailing under rule 89.2(c).
2. In the absence of the procedure stated above, the international jury shall not be regarded as a properly constituted one. Therefore, there may be appeals from its decisions

2. COMMUNICATIONS WITH COMPETITORS

- 2.1. Notices to competitors will be posted on the official notice board located near the Race Office.
- 2.2. Notices will also be posted on the event website <https://www.jeow.org/noticeboard>. Failure to post a notice on the website will not be grounds for redress. This changes RRS 62.
- 2.3. When a visual signal is displayed over an area, event or fleet flag, the signal applies only to that area, event or fleet. This changes the Race Signals preamble.
- 2.4. Signals ashore will be displayed on the flagpole located along the central promenade in front of the club house.

- 2.5. When flag AP is displayed ashore, '1 minute' in RRS Race Signals AP is replaced with the time shown below:

Area	Time
Enoshima, Kamakura	30min
Fujisawa, Zushi	45min
Sagami	60min

3. [DP] CODE OF CONDUCT

- 3.1. Competitors shall comply with any reasonable request from a regatta official.
- 3.2. Competitors shall handle any boats or equipment provided by the organizing authority with proper care and seamanship, and in compliance with any written instructions.
- 3.3. Boats that are on a Course Area or passing through a Course Area to which they are not assigned shall remain clear of the area where boats are racing and of any official boat.

4. CHANGES TO SAILING INSTRUCTIONS

- 4.1. Any change to the sailing instructions will be posted at the regatta office no later than 90 minutes before the first warning signal on the day it will take effect, except that any change to the format or schedule of races will be posted by 2000 on the day before it will take effect
- 4.2. When any SI addendum is changed, an updated version of it will be posted on the Official Notice Board as part of these sailing instructions.

5. FORMAT OF RACING

- 5.1. Boats in 470 Men and 470 Women will sail as one fleet and will be scored points for their finishing places in the overall fleet (i.e. results for individual events will be determined based on finishing places in the overall fleet without recalculation).
- 5.2. Boats in Laser Radial Women and Laser Radial Open will sail as one fleet and will be scored points for their finishing places in the overall fleet (i.e. results for individual events will be determined based on finishing places in the overall fleet without recalculation).

6. SCHEDULE OF RACES

- 6.1. The daily race schedule and the scheduled time of the warning signal for the first race are shown in SI Addendum D.
- 6.2. The first briefing for coaches and sailors will take place on Friday 21 September at 16:00h at home of sailing tent inside the boat park.
- 6.3. There will be a daily morning meeting with team leaders & Coaches, starting on Saturday 22 September at 08:45 in home of sailing tent inside the boat park.

- 6.4. The warning signal for each succeeding race will be made as soon as practicable.
- 6.5. The number of races will be as follows:

Event	Class	Number of Races
Windsurfer	RS:X	7
Mixed Two Person Dinghy	Nacra17	7
Men's Skiff, Women's Skiff	49er 49erFX	8
Heavyweight Men's One Person Dingy	Finn	
Men's One Person Dinghy	Laser	
Women's One Person Dinghy	Laser Radial	
Open One Person Dinghy	Laser Radial	
Men's Two Person Dinghy	Men's470	
Women's Two Person Dinghy, Open Two Person Dinghy	Women's47 0 420	

The number of races each day is at the discretion of the Race Committee. However no more than 4 races per day will be sailed.

- 6.6. To alert boats that a race or sequence of races will begin soon, the orange starting line flag will be displayed with one sound no later than five minutes before a warning signal is made.
- 6.7. On the last day of racing for each event, no warning signal will be made after 13:30.

7. CLASS FLAGS

Event	Class Insignia	Background Color
Men's Windsurfer	RS:X	White
Women's Windsurfer	RS:X	Light blue
Mixed Two Person Dinghy	Nacra17	White
Men's One Person Dinghy	Laser	White
Women's One Person Dinghy Open One Person Dinghy	Laser Radial	Light blue
Heavyweight Men's One Person Dingy	Finn	White
Men's Skiff	49er	White
Women's Skiff	FX	White
Men's Two Person Dinghy	470	White
Women's Two Person Dinghy	470	Light blue
Open Two Person Dinghy	420	Red & Blue

8. COURSE AREAS

The course areas and the Area Flags are shown in SI Addendum B.

9. THE COURSES

- 9.1. The diagrams in SI Addendum C show the courses, the course designations, the approximate angles between legs, the order in which marks are to be passed, and the side on which each mark is to be left.
- 9.2. No later than the warning signal, the Race Committee Signal Boat will display a board that indicates the course to be sailed and the approximate compass bearing of the first leg.

10. MARKS

10.1. Marks 1, 2, 3, and 4, or associated gate marks, will be as follows:

Area	Marks 1, 2, 3, 4	New Mark	Inflatable Finish Line Mark (when used)
Enoshima	Green	Pink	Yellow cylinder
Kamakura	Red	Light Blue	Green cylinder
Fujisawa	Yellow	Light Blue	Orange cylinder
Sagami	Orange	Red	Yellow cylinder
Zushi	Light Blue	Yellow	Pink cylinder

10.2. The starting and finishing line marks will be Race Committee vessels or inflatable marks.

10.3. Offset marks will be Orange cylinder.

10.4. Inflatable start line mark, when used, will be Orange cylinder.

11. THE START

11.1. The starting line will be between a staff displaying an orange flag on the Race Committee vessel at the starboard end and either

(a) the course side of the port-end inflatable starting mark, or

(b) a staff displaying an orange flag on the race committee vessel at the port end.

11.2. [DP] A buoy may be attached to the Race Committee starting boat anchor line just below keel depth. Boats shall not pass between this buoy and the Race Committee starting boat at any time. This buoy is part of the Race Committee starting boat ground tackle.

- 11.3. [DP] When a starting sequence is in progress, boats whose warning signal has not been made shall avoid the starting area. The starting area is defined as a rectangle 50 meters from the starting line in all directions.
- 11.4. A boat starting later than 4 minutes after her starting signal will be scored DNS (Did Not Start) without a hearing. This changes RRS A4 and A5.

12. COURSE CHANGES

- 12.1. To change the next leg of the course, the Race Committee will lay a new mark and remove the original mark as soon as practicable. When in a subsequent change a new mark is replaced, it will be replaced by an original mark.
- 12.2. Courses will not be shortened. This changes RRS 32.

13. THE FINISH

The finishing line will be between a staff displaying an orange flag on the finishing vessel and the course side of the inflatable finishing mark.

14. PENALTY SYSTEM

- 14.1 RRS Appendix P, Special Procedures for Rule 42, will apply.
- 14.2 For the Men's Skiff, Women's Skiff, Mixed Two Person Dinghy, RRS 44.1 and RRS P2.1 are changed so that the Two-Turns Penalty is replaced by the One-Turn Penalty.
- 14.3 In RRS 44.2 insert after the first sentence: However if Mark 1a is set, a boat may delay taking a penalty for an incident in the zone around Mark 1 or on the leg between Mark 1 and Mark 1a, until she has passed Mark 1a.

15. TIME LIMITS AND TARGET TIMES

- 15.1. Time limits and target times in minutes are as follows:

Class	Time Limit	Mark 1 Time Limit	Finish Windo	Target Time
470 M,470 W, Laser, Laser Radial,Finn	75	25	15	50
49er, 49er FX, Nacra17	50	20	10	35
RS:X M, RS:X W	45	20	10	20-25
420	80	30	10	50

- 15.2. If no boat has passed Mark 1 within the Mark 1 time limit the race will be abandoned.
- 15.3. Failure to meet the target time will not be grounds for redress. This changes rule 62.1(a).

15.4. Boats failing to finish within the time stated in the Finish Window after the first boat sails the course and finishes will be scored DNF (Did Not Finish). This changes RRS 35, A4 and A5.

16. PROTESTS, PENALTIES AND REQUESTS FOR REDRESS

- 16.1. Protest forms are available at the Race Office. Protests and requests for redress or reopening shall be delivered there within the appropriate time limit.
- 16.2. For each fleet, the protest time limit is 60 minutes after the last boat has finished the last race of the day, or the Race Committee signals no more racing today, whichever is later
- 16.3. Notices will be posted within 30 minutes of the protest time limit to inform boats of hearings in which they are parties or named as witnesses. Hearings will be held in the protest room, located on the first floor of the club house and located inside the Enoshima junior yacht club house. Hearings may be scheduled to begin up to 30 minutes before the end of protest time.
- 16.4. Notices of protests by the Race Committee, Technical Committee, or Protest Committee will be posted to inform boats under RRS 61.1(b).
- 16.5. A list of boats that have been penalized under Appendix P for breaking RRS 42 and under SI 16.8 will be posted.
- 16.6. Penalties for breaches of class rules, or rules in the NoR and SIs marked [DP] or [SP] are at the discretion of the Protest Committee.
- 16.7. Breaches of rules in the NoR and SIs marked [NP] will not be grounds for a protest by a boat. This changes RRS 60.1(a).
- 16.8. For breaches of rules in the NoR and SIs marked [SP], the Race Committee may apply a standard penalty without a hearing. A list of these breaches and the associated penalties will be posted on the Official Notice Board. However, the Race Committee may protest a boat when they consider the standard penalty to be inappropriate. This changes RRS 63.1 and A5.
- 16.9. On the last scheduled day of racing, a request for redress based on a Protest Committee decision shall be delivered no later than 30 minutes after the decision was posted. This changes RRS 62.2.
- 16.10. Breaches of RRS G1.1(b) will not be grounds for a protest by a boat. This changes RRS 60.1(a).
- 16.11. If RRS Appendix N1.4 applies, the time limit for requesting a hearing under that rule is 30 minutes after the party was informed of the panel's decision.
- 16.12. In RRS 63.1 add '64.4(b)' after '30.4'.
- 16.13. Decisions of the International Jury will be final as provided in RRS 70.5

17. [DP] EQUIPMENT AND MEASUREMENT CHECKS

A boat or equipment may be inspected at any time for compliance with the class rule and the Sailing Instructions.

18. [DP] REPLACEMENT OF CREW OR EQUIPMENT

- 18.1. Substitution of competitors will not be allowed without prior written approval of the Race Committee and shall comply with any restrictions in the Notice of Race.
- 18.2. Substitution of damaged or lost equipment will not be allowed unless authorized by the race committee. Request of substitution shall be made to the committee at the first reasonable opportunity.

19. OFFICIAL BOATS

19.1. Official boats will be marked as follows:

Boat	Flag description
A Race Committee boat	Pink flag with white " RC "
An International Jury boat	Black flag with white " JURY "
A MEDIA boat	White flag with Blue "MEDIA"

19.2. Actions by official boats shall not be grounds for requesting redress by a boat. This changes RRS 60.1(b).

20. [DP] SUPPORT BOATS

- 20.1. Except when rendering assistance to a boat in danger at the boat's request or at the request of the Race Committee, support and coach boats shall stay 100 meters outside areas where boats are racing from the time of the Preparatory Signal for the first Class to start until the time the last boat finishes or the Race Committee signals a postponement, general recall or abandonment.
- 20.2. A hearing may be called if a coach boat fails to comply with the requirements of this SI 20 and SI 22.6. The penalty for failing to comply with these requirements or the oral instructions of the Race Committee or the International Jury will be at the discretion of the International Jury. The penalty may be imposed on any or all boats associated with the support or coach boat.

21. SCORING

- 21.1. RRS Appendix A will apply. RRS B8 is deleted.
- 21.2. One race is required to be completed to constitute a regatta.
- 21.3. When fewer than three races have been completed, a boat's series score will be the total of her race scores.
- 21.4. When three or more races have been completed, a boat's series score will be the total of her race scores excluding her worst score.
- 21.5. To request correction of an alleged error in posted race or series results, a boat may complete a scoring enquiry form available from the Race Office.

22. [DP] [NP] SAFETY REGULATIONS

- 22.1. Boats not leaving the harbor for a scheduled race shall promptly notify the Race Office.
- 22.2. [SP] Check-out and check-in
- 22.2.1. Before leaving to race on each scheduled racing day, a crew shall personally sign out on the required form located at the Race Office.
- 22.2.2. Within the protest time limit after returning ashore, a crew shall personally sign in on the required form located at the Race Office.
- 22.3. A boat that retires from racing shall notify the Race Committee before leaving the racing area, if possible, and shall complete a retirement declaration form at the Race Office as soon as possible after returning ashore.
- 22.4. Boats not racing shall remain clear of boats that are racing and official boats.
- 22.5. When the Race Committee displays pennant 8 on the Race Committee vessels, all official and support boats shall monitor for search and rescue instructions.

23. [DP] RADIO COMMUNICATIONS

A boat shall neither make radio transmissions while racing nor receive radio communications not available to all boats, except in an emergency or when using equipment provided by the Race Committee. This restriction also applies to mobile telephones.

24. [SP] TRACKING EQUIPMENT

- 24.1. Boats may be required to carry electronic tracking equipment, which will be provided by the Organizing Authority.
- 24.2. If tracking equipment is used, competitors shall collect a tracking device when signing-on, and mount it securely to their boat or crew for the duration of racing. The device shall be returned to the sign-off desk within the protest time limit.
- 24.3. Radio communications performed by the tracking equipment is not a breach of SI 23.

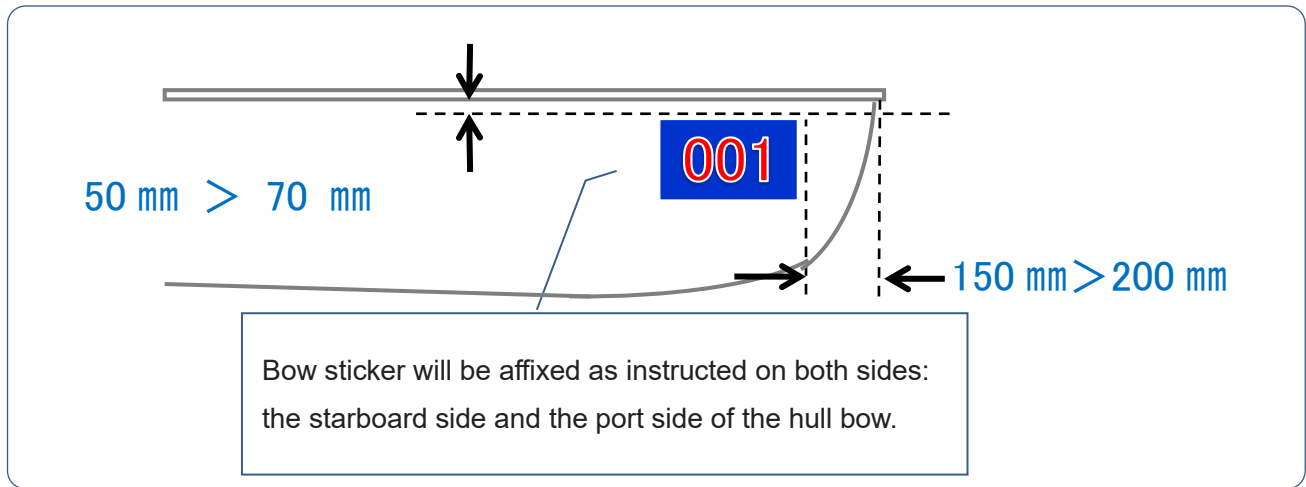
25. [DP] TRASH DISPOSAL

As sailors, we seek to protect and restore our oceans and coastal waters. See RRS 55. Boats shall not intentionally put trash in the water. Trash may be placed aboard support and Race Committee boats and jury boats.

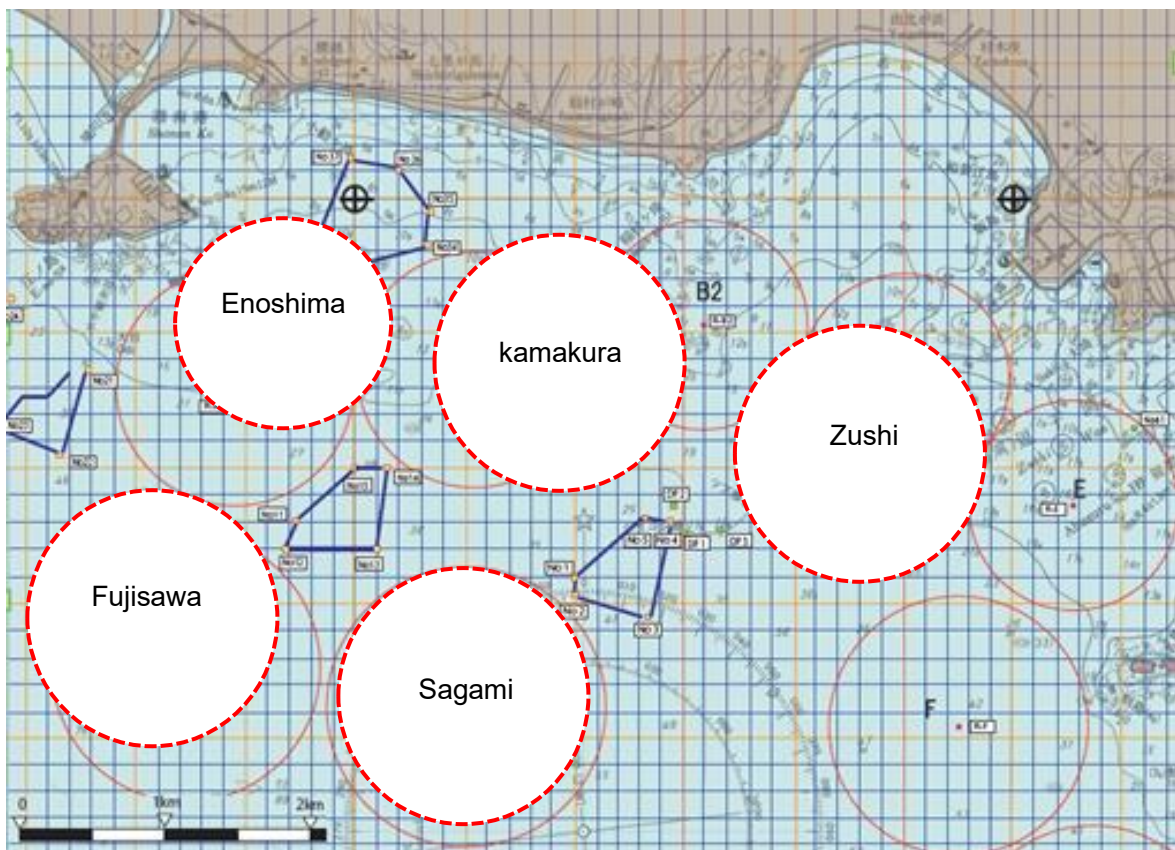
26. PRIZES

Medals will be awarded to the top 3 boats in each event. The Organizing Authority may alter prizes if less than 15 boats are entered in an event.

SI Addendum A



SI Addendum B COURSE AREAS



Area	VHF Channel	Area	VHF Channel
Enoshima	73	Fujisawa	74

Kamakura	72	Sagami	69
Zushi	71		

SI Addendum C COURSE ILLUSTRATION

I

Course : Inner Trapezoid

Signal	Mark Rounding Order
I2	Start -1 -4s/4p -1 -2 -3p -Finish
I3	Start -1 -4s/4p -1 -4s/4p -1 -2 -3p -Finish

O

Course : Outer Trapezoid

Signal	Mark Rounding Order
O2	Start -1 -2 -3s/3p -2 -3p -Finish
O3	Start -1 -2 -3s/3p -2 -3s/3p -2 -3p -Finish

L

Course : Windward/Leeward

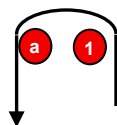
Signal	Mark Rounding Order
L2	Start -1 -4s/4p -1 -Finish
L3	Start -1 -4s/4p -1 -4s/4p -1 -Finish

LR

Course : Windward/Leeward

Signal	Mark Rounding Order
LR2	Start -1 -4s/4p -1 -4p -Finish
LR3	Start -1 -4s/4p -1 -4s/4p -1 -4p -Finish

LA



Course : Windward/Leeward

Signal	Mark Rounding Order
LA2	Start -1 -1a-4s/4p -1 -1a-Finish
LA3	Start -1 -1a-4s/4p -1-1a -4s/4p -1-1a -Finish

SI Addendum D RACE SCHEDULE

Class	Saturday 22			Sunday 23			Monday 24		
	Area	Warning	#	Area	Warning	#	Area	Warning	#
RS:X Men	Kamakura	10.25	3	Kamakura	10.25	2	Kamakura	10.25	2
RS:X Women	Kamakura	10.35	3	Kamakura	10.35	2	Kamakura	10.35	2
Laser	Zushi	10.25	3	Zushi	10.25	3	Zushi	10.25	2
Laser Radial	Zushi	10.35	3	Zushi	10.35	3	Zushi	10.35	2
Finn	Sagami	11.00	3	Sagami	10.40	3	Sagami	10.40	2
470	Sagami	10.45	3	Sagami	10.25	3	Sagami	10.25	2
420	Sagami	10.50	3	Sagami	10.30	3	Sagami	10.30	2
49er	Fujisawa	10.35	3	Fujisawa	12.50	3	Fujisawa	10.35	2
49er FX	Fujisawa	10.45	3	Fujisawa	13.00	3	Fujisawa	10.45	2
Nacra 17	Fujisawa	12.30	2	Fujisawa	10.35	3	Fujisawa	12.30	2

