



# SAILING INSTRUCTIONS

## 470 CLASS OPEN EUROPEAN CHAMPIONSHIP 6 - 14 MAY 2019

*Organizing Authority (OA): Yacht Club Sanremo, in co-operation with the Italian 470 National Class Association, the International 470 Class Association and under the auspices of the Italian Sailing Federation (FIV).*

### 1. RULES

- 1.1 The Championship will be governed by the rules as defined in *Racing Rules of Sailing* (RRS).
- 1.2 National Authority prescriptions will apply as in Addendum E of these SIs.
- 1.3 For the Medal Races, World Sailing Addendum Q, Umpired Fleet Racing, [http://www.sailing.org/tools/documents/AddendumQversion20190101-\[24621\].pdf](http://www.sailing.org/tools/documents/AddendumQversion20190101-[24621].pdf) currently available on the World Sailing website shall apply.
- 1.4 No Class Rule variations will apply.
- 1.5 In all rules governing this Championship:
  - a. Breaches of rules in the sailing instructions marked **[NP]** shall not be grounds for protests by a boat. This changes RRS 60.1(a).
  - b. For breaches of rules in the sailing instructions marked **[SP]** a standard penalty may be applied by the Race Committee without a hearing, or a discretionary penalty applied by the International Jury with a hearing. This changes RRS 60.2, 63.1 and A5.
- 1.6 If there is a conflict between languages the English text will take precedence.
- 1.7 If there is a conflict between the Notice of Race (NoR) and these SIs, the SIs will take precedence. This changes RRS 63.7.
- 1.8 Decisions of the International Jury will be final as provided in RRS 70.5.

### 2. **[DP] [SP] [NP] ADVERTISING, BOW NUMBERS, CAMERAS AND ELECTRONIC EQUIPMENT**

- 2.1 [DP] Boats shall display bow numbers and advertising chosen and supplied by the OA. Boats assigned to the medal races may be provided with new bow numbers to be used for the medal races. If this rule is broken, World Sailing Regulation 20.9.2 applies.





- 2.2 [SP] Competitors ranking first second and third in the series at the beginning of each day shall wear yellow, blue and red bibs respectively on top of any clothing or PFD, visible while racing that day. The bibs will be provided by the OA.
- 2.3 [SP] Boats are required to display national flags on their mainsail as in class rule C.10.4 (a) (4). 470/World Sailing approved national flag manufacturers can be found at: [http://www.sailing.org/tools/documents/ISAFFlagSupplierV5-\[20736\].pdf](http://www.sailing.org/tools/documents/ISAFFlagSupplierV5-[20736].pdf)
- 2.4 For split fleets, boats shall display a coloured ribbon corresponding to the fleet to which she has been assigned. The ribbons shall be fixed above the upper batten of the mainsail. The OA will supply the ribbons.
- 2.5 Boats may be required to carry on-board cameras, sound equipment or positioning equipment as specified by the OA.

### **3. [DP] CODE OF CONDUCT**

---

- 3.1 Competitors and support persons shall comply with any reasonable requests from a regatta official.
- 3.2 Competitors shall handle any boats or equipment provided by the OA with proper care and seamanship, and in compliance with any written instructions.
- 3.3 [SP] Boats not racing shall avoid the area where boats are racing and any official boats.
- 3.4 [SP] Boats that are on a Course Area to which they are not assigned shall avoid the area where boats are racing and any official boat.
- 3.5 The OA may reduce or remove a prize in the case of misconduct or refusal to comply with any reasonable request, including attendance at official functions.

### **4. COMMUNICATIONS WITH COMPETITORS**

---

- 4.1 Notices to competitors will be posted on the official notice board located out of the entrance of Race Office.
- 4.2 Signals made ashore will be displayed on the signal mast located in front of the Race Office.
- 4.3 When a visual signal is displayed over a racing area or fleet flag, it applies to that racing area or fleet only. This changes the Race Signals preamble.
- 4.4 When flag AP is displayed ashore, '1 minute' is replaced with 'not less than 45 minutes' in race signal AP.
- 4.5 For the Medal Race only, when flag AP is displayed ashore, '1 minute' is replaced with 'not less than 30 minutes' in race signal AP.
- 4.6 [SP] [NP] Flag D displayed ashore means: 'The warning signals will be made not less than 45 minutes after flag D is displayed or not before the scheduled time, whichever is later. 'Boats shall not leave the boat park until this signal is made'.
- 4.7 [SP] [NP] For the Medal Race when flag D is displayed ashore means: 'The warning signal will be made not less than 30 minutes after flag D is displayed or not before the scheduled time, whichever is later. Boats shall not leave the boat park until this signal'.

### **5. CHANGES TO THE SAILING INSTRUCTIONS**

---

- 5.1 Any change to the Sailing Instructions will be posted before 10.00 on the day it will take effect, except that any change to the schedule of races of a day will be posted by 20.00 on the day before it will take effect.
- 5.2 Any re-assignment of course areas can be done 30 minutes before flag D is displayed ashore or 30 minutes before flag AP is removed ashore.



## 6. [NP] CHAMPIONSHIP FORMAT

- 6.1 The Championship format will consist of an Opening Series and a Medal Race.
- 6.2 The opening series may be divided into Qualifying Series and Final Series.
- Qualifying series:** 5 races are scheduled for each event. Boats may be divided into fleets.
  - Boats will be assigned to fleets: Yellow, Blue and Red etc. of as equal size and ability as possible. Initial assignment will be made by a seeding committee appointed by the International 470 Class Association. Those assignments will be posted by 10.00 on the day of the first scheduled race for each event.
  - Boats will be reassigned to fleets after each day of racing. If all fleets have completed the same number of races, boats will be reassigned on the basis of their ranks in the series. If all fleets have not completed the same number of races, the series scores for reassignment will be calculated for those races, numbered in order of completion, completed by all fleets.

Reassignments will be made as follows:

Rank in series	Assignment (3 fleets)	Assignment (2 fleets)
First	Yellow	Yellow
Second	Blue	Blue
Third	Pink	Blue
Fourth	Pink	Yellow
Fifth	Blue	Yellow
Sixth	Yellow	Blue
And so on		

If two or more boats have the same rank, they will be entered in the left column in the order of fleets in SI 6.2.2.

- Assignments will be based on the ranking available at 21:00 that day regardless of protests or requests for redress not yet decided.
- If the fleets have not completed the same number of races by the end of a day, the fleets with fewer races will continue racing the following day until all fleets have completed the same number of races. All boats will thereafter race in the new fleets.
- Final series:** 6 races are scheduled for each event.
- Boats will be assigned to final-series fleets Gold, Silver and Bronze on the basis of their ranks in the qualifying series. There will be the same number of fleets in the final series as there were in the qualifying series. The final-series fleets will have, as nearly as possible, equal size but none larger than the Gold fleet. Boats with the best qualifying-series ranks will race all final-series races in the Gold fleet, boats with the next-best qualifying-series ranks will race in the Silver fleet, etc.
- Any recalculation of qualifying-series ranking after boats have been assigned to final-series fleets will not affect the assignments except that a redress decision may promote a boat to a higher fleet.

### 6.3 Single Series

If there are less than 40 entries at event, then the Championships will be competed in one single fleet with 11 final races at the Opening Series and a Medal Race.

### 6.4 Medal Race

- A Medal Race will be scheduled for each event if 1 or more final series races have been completed by the gold fleet. If the event is raced as a single series, a Medal Race will be



scheduled if at least 5 races have been completed.

- b. The 10 boats ranked highest in the Opening Series or in the Single Series shall qualify to compete in the Medal Race.
  - c. Assignments to the Medal Race will be based on the ranking available at 09:00 on the day of the Medal Race. The protest committee may extend this timelimit.
- 6.5 The number of boats assigned to any fleet may be amended at the discretion of the OA.

## 7. SCHEDULE

### 7.1 Schedule of races:

Day 1 - Monday 6 May 2019	Registration and measurement	09:00 -18:00
Day 2 - Tuesday 7 May 2019	Registration and measurement Opening Ceremony	09:00 -18:00 19:00
Day 3 - Wednesday 8 May 2019	Registration and measurement Practice Race	09:00 -18:00 13:00
Day 4 - Thursday 9 May 2019	Qualifying series	12:00
Day 5 - Friday 10 May 2019	Qualifying series	TBA
Day 6 - Saturday 11 May 2019	Qualifying/Final series	TBA
Day 7 - Sunday 12 May 2019	Qualifying/Final series	TBA
Day 8 - Monday 13 May 2019	Qualifying/Final series	TBA
Day 9 - Tuesday 14 May 2019	Final series/Medal Race Prize Giving / Closing Ceremony	TBA TBA

- 7.2 No warning signal will be given after 16:30 on the last racing day.
- 7.3 No more than three races shall be sailed each day.
- 7.4 Races not sailed on the scheduled day may be sailed on a following day at the discretion of the race committee.
- 7.5 The warning signal for each succeeding race will be made as soon as practicable.

## 8. CLASS FLAGS

### 8.1 Fleet flags for single series will be:

470 Men	White flag with blue 470 insignia
470 Women	Blue flag with red 470 insignia

### 8.2 Fleet flags for Qualifying Series will be:

470 Men	Yellow, blue and pink flags corresponding to fleets
470 Women	Red flag

### 8.3 Fleet flags for Final series will be:

470 Men	Yellow flag for gold fleet, blue flag for silver fleet and pink flag for bronze fleet
470 Women	Red flag

### 8.4 Fleet flags for the Medal Races will be as in SI 8.1.

## 9. RACING AREA

Addendum A shows the location of the racing areas.

## 10. THE COURSES

### 10.1 The diagrams in Addendum B show the courses, the course designations, the approximate



angles between legs, the order in which marks are to be passed, and the side on which each mark is to be left.

10.2 Courses will not be shortened. This changes RRS 32.

10.3 Not later than the warning signal, the race committee signal boat will display the course designation and the approximate compass bearing of the first leg.

## 11. MARKS

11.1 Marks 1 & 2, Gates 3 (3s/3p) and 4 (4s/4p) will be orange cylindrical inflatable buoys.

11.2 The starting marks will be the Race Committee starting boat at the starboard end and a boat or mark displaying an orange flag at the port end. See Addendum B.

11.3 The finishing marks will be a Race Committee boat at the port end and a boat or mark displaying an orange flag at the starboard end except from the LG course where the Race Committee boat will be at the starboard end and the boat or mark displaying an orange flag at the port end. See Addendum B.

11.4 New marks as provided in SI 13.1 will be orange cylindrical inflatable buoys with a black band around.

11.5 A race committee boat signalling a change of course is a mark as provided in SI 13.2

## 12. THE START

12.1 The starting line will be between staffs displaying an orange flag on the starting marks.

12.2 To alert boats that a race or sequence of races will begin soon, the orange starting line flags will be displayed with one sound for at least five minutes before a warning signal is displayed.

12.3 [DP] [NP] Boats whose warning signal has not been made shall keep clear to leeward of the starting area. The starting area is defined as a rectangle 100 meters from the starting line and marks in all directions.

12.4 A boat starting later than four minutes after her starting signal will be scored DNS. This changes RRS A4 and RRS A5.

## 13. CHANGE OF THE NEXT LEG OF THE COURSE

13.1 To change the next leg of the course, the race committee will (a) lay a new mark, (b) move the finish line, or (c) move the leeward gate. When a new mark is laid, the original mark will be removed as soon as practicable. When in a subsequent change a new mark is replaced, it will be replaced by the original mark.

13.2 Except at a gate, boats shall pass between the race committee boat signaling the change of course and the nearby mark, leaving the mark to port and the race committee boat to starboard. This changes RRS 28.1.

## 14. THE FINISH

The finishing line will be between orange flags on the finishing marks.

## 15. PENALTY SYSTEM

15.1 RRS Appendix P, *Special Procedures for RRS 42*, will apply.

15.2 RRS P2.3 will not apply and RRS P2.2 is changed so that it will apply to any penalty after the first one.



## 16. TIME LIMITS AND TARGET TIMES

16.1 Time limits are as follows:

	Time Limit	Mark 1 Time Limit	Finish Window	Race Target Time
<b>Fleet race</b>	75	20	10	45-50
<b>Medal race</b>	30	10	5	20-25

16.2 If no boat has passed Mark 1 within the Mark 1 time limit the race will be abandoned.

16.3 Boats failing to finish within the time stated in the Finish Window after the first boat sails the course and finishes will be scored Did Not Finish. This changes RRS 35, RRS A4 and RRS A5.

16.4 Failure to meet the target time will not be ground for redress. This changes RRS 62.1(a).

## 17. PROTESTS

17.1 Protest forms are available at the Race Office. Protests and requests for redress or reopening shall be delivered there within the appropriate time limit.

17.2 For each fleet, the protest time limit is 60 minutes after the last boat has finished the last race of the day or racing postponed or abandoned for the day.

17.3 Notices will be posted within 30 minutes of the protest time limit to inform competitors of hearings in which they are parties or named as witnesses. Hearings will be held in the protest room beginning at the time posted. Hearings may be scheduled to begin up to 15 minutes before the end of the protest time limit.

17.4 Notices of protests by the Race Committee, Technical Committee or International Jury will be posted to inform boats under RRS 61.1(b).

17.5 A list of boats that have been penalized under RRS Appendix P for breaking RRS 42 and under SI 17.8 will be posted.

17.6 For the purpose of RRS 64.3(b) the 'authority responsible' is the 470 Class Technical Delegate.

17.7 Penalties for breaches of the Event Measurement Regulations and Policies, Support Team Regulations, Class Rules or rules in the NoR and SIs marked [DP] or [SP] should the case go to a hearing, are at the discretion of the International Jury. A boat may accept a discretionary penalty for the breaches stated above before a hearing concerning the same incident by completing a form available at the jury office.

17.8 For breaches of NoR/SI marked [SP], the race committee may apply a standard penalty without a hearing. A list of these breaches and the associated standard penalties will be posted on the Official Notice Board. However, the race committee may protest a boat when they consider the standard penalty to be inappropriate. A boat that has been penalised with a standard penalty can neither be protested for the same incident by another boat nor can another boat request redress for this race committee action. This changes RRS 60.1, 63.1 and Appendix A5.

17.9 On the last racing day of the opening series or qualifying series a request for reopening a hearing shall be delivered:

- Within the protest time limit if the requesting party was informed of the decision on the previous day.
- No later than 30 minutes after the requesting party was informed of the decision on that day. This changes RRS 66.

17.10 On the last racing day of the opening series or qualifying series, or on the last day of racing, a request for redress based on the jury decision shall be delivered no later than 30 minutes after the decision was posted. This changes RRS 62.2 and 66.



17.11 Protests may be heard under RRS N1.4(b). The time limit for requesting a hearing by a full International Jury is 15 minutes for opening series or 1 minute for a medal race after the parties were informed of the panel's decision.

## 18. SCORING

18.1 The Low Point System of RRS Appendix A shall apply to all races; RRS A4.1 is changed so that the points in the Medal Race are doubled.

18.2 To request correction of an alleged error in posted race or series results, a boat may complete a scoring enquiry form available at the race office.

### 18.3 Qualifying Series:

- a. There will be a minimum of 4 and a maximum of 5 races in the qualifying series.
- b. When there are 4 completed qualifying races at the end of a racing day, then the event will proceed on the next racing day with the Final series.
- c. All race scores from the Qualifying Series will be carried forward to the Final Series.
- d. For the Qualifying Series, RRS A4.2 is changed so that those scores are based on the number of boats assigned to the largest fleet.
- e. If at the end of the Qualifying Series some boats have more race scores than others, scores for the most recent races will be excluded so that all boats have the same number of race scores.

### 18.4 Final Series and Medal Race:

- a. 6 races are scheduled in the final series plus a Medal Race.
- b. At least 1 final race is required to be completed by the gold fleet to constitute the regatta series for all fleets and/or for the Medal Race to be scheduled.
- c. Final series fleets will be scored separately and different final series fleets need not have completed the same number of final races.
- d. For the final ranking, boats assigned to the Gold fleet will be ranked higher in the regatta than the boats assigned to the Silver fleet, and so on.
- e. For the Final Series RRS A4.2 is changed so that those scores are based on the number of boats assigned to the given fleet.

### 18.5 Single series:

- a. There will be 11 races in the Single Series plus a Medal Race.
- b. At least 5 races are required to be completed to constitute the regatta series and/or to enter the Medal Race.

### 18.6 Discards:

- a. When fewer than 3 races have been completed, a boat's series score will be the total of her race scores.
- b. When 3 or more races have been completed, a boat's series score will be the total of her race scores excluding her worst score.
- c. The score of the Medal Race will not be excluded.

### 18.7 Medal Race:

- a. The boats assigned to compete in the Medal Race will be ranked highest in the regatta except for a boat disqualified from the Medal Race under RRS 5, RRS 6 or RRS 69.
- b. RRS A4.2 is changed so that the scores are based on the number of boats assigned to



compete in that race. A boat's score shall be double the number of points specified in RRS Appendix A4.1

- c. For boats assigned to compete in the Medal Race, ties in the regatta score are broken by the Medal Race score. This changes RRS A8. For boats with the same points score in the Medal Race, ties in the regatta score are broken applying RRS A8.
- d. A boat assigned to compete in the medal race shall make a genuine effort to start, sail the course and finish. The penalty for a breach of this instruction will be ranking the boat tenth in the regatta. If there are two such boats, they will be ranked ninth and tenth, in order of their opening-series ranks, and so on. This changes RRS A2.

## 19. [DP] [NP] SAFETY REGULATIONS

### 19.1 [SP] Check-out and check-in

- a. Before leaving to race on each scheduled racing day, a crew shall personally sign out on the required form located next to the Official Notice Board.
- b. Within the protest time limit after returning ashore, a crew shall personally sign in on the required form located next to the Official Notice Board.

19.2 [SP] Boats not leaving the harbor for a scheduled race shall promptly notify the Race Office.

19.3 [SP] A boat that retires from racing shall notify the Race Committee before leaving the racing area, if possible, and shall complete a retirement declaration form at the Race Office as soon as possible after returning ashore.

## 20. [DP] [NP] REPLACEMENT OF CREW OR EQUIPMENT

20.1 Substitution of competitors will not be permitted without prior written approval of the race committee and shall comply with any restrictions in the Notice of Race.

20.2 Substitution of damaged or lost equipment shall be made according to Event Measurement Regulations and Policies, Part A section 4.

## 21. [DP] [NP] EQUIPMENT AND MEASUREMENT CHECKS

21.1 A boat or equipment may be inspected at any time for compliance with the Class Rules and SIs.

21.2 On the water, a boat shall act in accordance with any instruction by the Technical Committee to proceed immediately to a designated area for inspection.

## 22. OFFICIAL BOATS

Official boats will be marked as follows:

Official Boat	Flag
Race Committee	White flag with a blue "RC"
Measurer	White flag with a blue "M"
International Jury	Yellow flag with a black "J"
Media / Press	"PRESS" flag
Safety Boat	White flag with a red "S"

## 23. [NP] [DP] SUPPORT BOATS

See Addendum C Support Boat Regulation.

## 24. [DP] [NP] TRASH DISPOSAL

In addition to RRS 55 trash may be placed aboard support and race committee boats.





## 25. [DP] [NP] BERTHING

---

- 25.1 When berthed, boats shall be kept in their assigned place in the boat park. Boats shall not be moved from their parking spaces toward the launching ramps until flag D is displayed and instructed to do so by the Beach Master.
- 25.2 The following inspection regulations will apply for the boats assigned to the Medal Races:
- On completion of the opening series, the boats assigned to compete in the Medal Race for each Event will be subject to equipment inspection.
  - The location of the Inspection Area is defined below.
  - For the duration of the inspection period, all controlled equipment shall be kept either with the boat or stored in the Inspection Area. No person shall access the equipment, and nothing shall be taken on or off the boat without written permission from the 470 Event Chief Measurer.
  - If a boat or equipment needs repairs either inside or outside the Inspection Area, a request for permission must be made in writing to the Event Chief Measurer.
  - Assigned boats and their equipment shall be placed in the Inspection Area no later than 90 minutes before the scheduled warning time of their race except if assignment is subject to protest or redress. In this case boats and their equipment shall be placed in the Inspection Area as soon as practicable after their assignment to the Medal Race is confirmed.
  - [SP] [NP] On the scheduled day of the Medal Race, boats shall be ready for equipment inspection with a boat representative 90 minutes before the scheduled warning time of their race, unless otherwise instructed by the Event Chief Measurer. This includes boats that may qualify for the Medal Race following a protest or request for redress.
  - [SP] [NP] Boats shall not leave the Inspection Area to go afloat until signaled by the Race Committee.
  - Approximate location of Medal Race inspection area: near the launching ramps.

## 26. [DP] [NP] RADIO COMMUNICATION

---

A boat shall neither make radio transmissions while racing nor receive radio communications not available to all boats, except in an emergency or when using equipment provided by the Race Committee. This restriction also applies to mobile telephones.

## 27. PRIZES AND TITLE

---

Prizes will be awarded as stated in Notice of Race.

## 28. DISCLAIMER OF LIABILITY AND RISK STATEMENT

---

- 28.1 Competitors and support team members participate in the Championship entirely at their own risk and they are reminded of the provisions of RRS 4, Decision to Race. Sailing is by its nature an unpredictable sport and therefore involves an element of risk. By taking part in the event, each competitor agrees and acknowledges that:
- They are aware of the inherent element of risk involved in the sport and accept responsibility for the exposure of themselves, their crew and their boat to such inherent risk whilst taking part in the event;
  - They are responsible for the safety of themselves, their crew, their boat and their other property whether afloat or ashore;
  - They accept responsibility for any injury, damage or loss to the extent caused by their own actions or omissions;
  - By participating in any race, they are satisfied that their boat is in good order, equipped to sail in the event and they are fit to participate;



- e. The provision of a race management team, safety boats, judges and other officials and volunteers by the organizer does not relieve them of their own responsibilities;
  - f. The provision of safety boat cover is limited to such assistance, particularly in extreme weather conditions, as can be practically provided in the circumstances.
  - g. They will familiarize themselves with any venue/event specific risks, adhere to rules and information produced for the venue/event and they will attend any venue/event safety briefings.
- 28.2 The Organising Authority and all parties involved in the regatta organisation will not accept any liability for material damage or personal injury or death sustained in conjunction with or prior to, during, or after the regatta.

## **29. RIGHTS TO USE NAME AND LIKENESS**

---

By participating in this Championship competitors automatically grant to the International 470 Class Association and to the OA and their sponsors the right in perpetuity to make, use and show, from time to time at their discretion any motion pictures, still pictures and live, taped or filmed television and other reproductions of the athlete during the Championship, and of all of his or her material related to the Championship, without compensation.

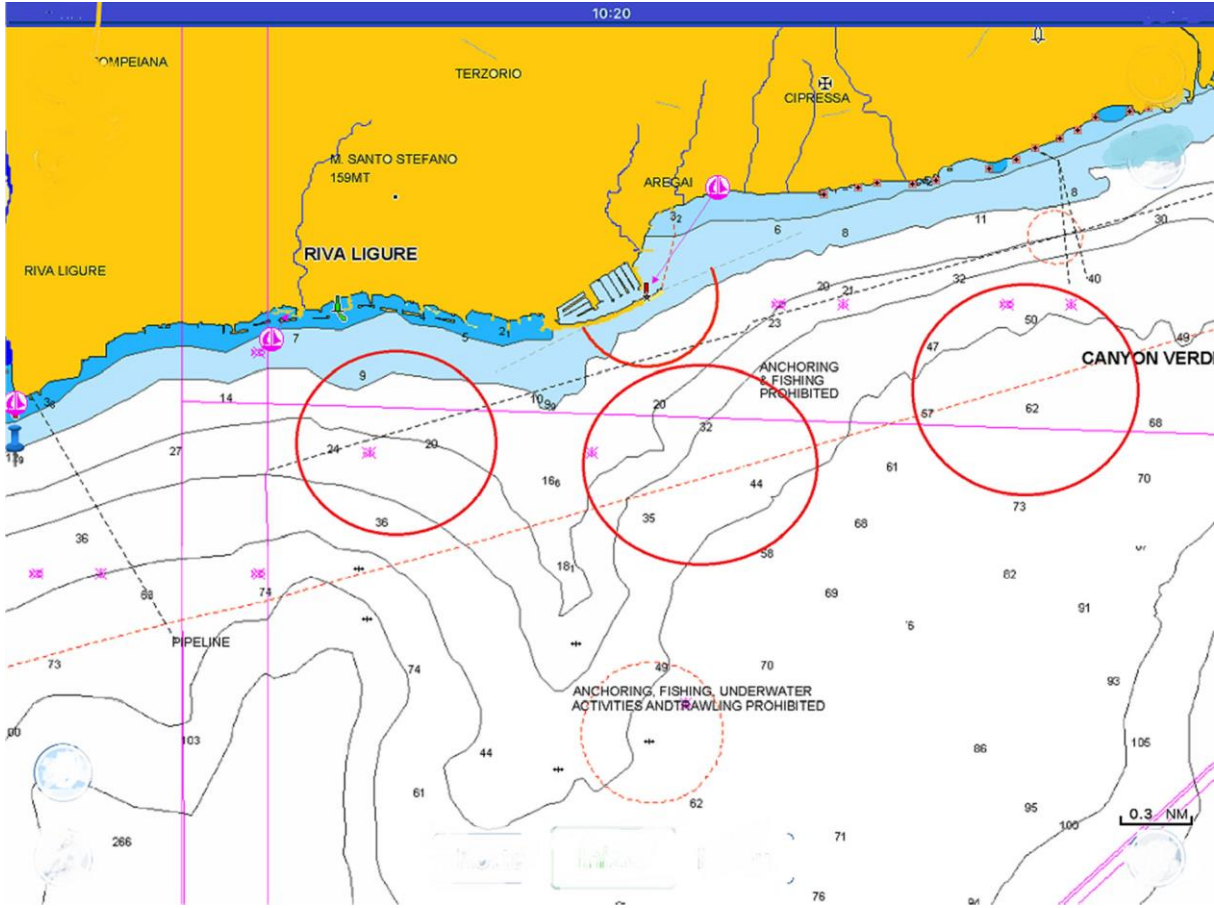
## **30. INSURANCE**

---

Each participating boat shall be insured with valid third party liability insurance with a minimum cover EUR 1.500.000 per event or equivalent. A certificate of such insurance shall be shown during registration. The OA is not responsible for verifying the status or validity of certificates.



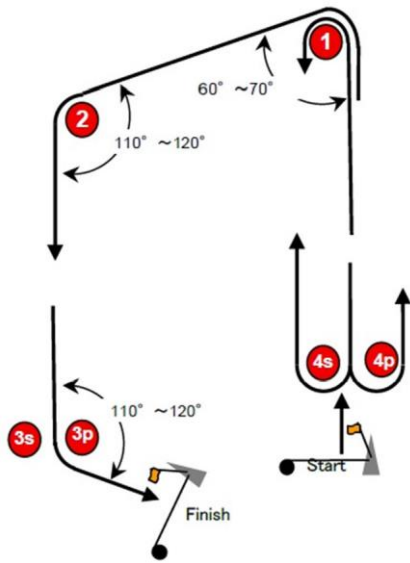
## ADDENDUM A: COURSE AREAS





## ADDENDUM B: THE COURSES

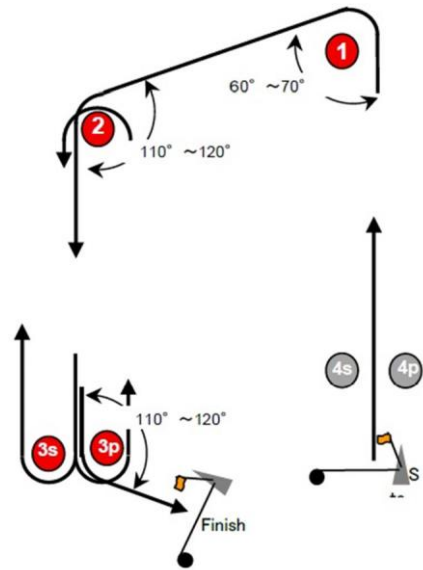
**I**



Course : Inner Trapezoid

Signal	Mark Rounding Order
I2	Start -1 -4s/4p -1 -2 -3p -Finish
I3	Start -1 -4s/4p -1 -4s/4p -1 -2 -3p -Finish

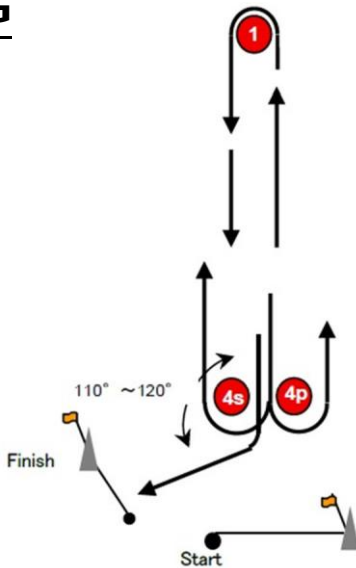
**O**



Course : Outer Trapezoid

Signal	Mark Rounding Order
O2	Start -1 -2 -3s/3p -2 -3p -Finish
O3	Start -1 -2 -3s/3p -2 -3s/3p -2 -3p -Finish

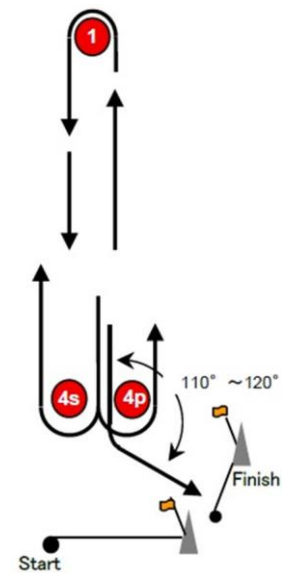
**LG**



Course : Windward/Leeward

Signal	Mark Rounding Order
LG2	Start -1 -4s/4p -1 -4s -Finish
LG3	Start -1 -4s/4p -1 -4s/4p -1 -4s - Finish

**LR**



Course : Windward/Leeward

Signal	Mark Rounding Order
LR2	Start -1 -4s/4p -1 -4p -Finish
LR3	Start -1 -4s/4p -1 -4s/4p -1 -4p -Finish



## ADDENDUM C: SUPPORT BOAT REGULATIONS

### 1. GENERAL

- 1.1 These Support Boat Regulations (SBR) shall apply from 00:00 on 6 May 2019 until 23:59 on 14 May 2019.
- 1.2 For the purposes of these regulations, a support boat includes any boat that is under the control or direction of a person who is or may provide physical or advisory support to an athlete, including the gathering of data that may be used at a later time.
- 1.3 The Organizing Authority may inspect boats at any time to ensure that they comply with these regulations, and the person responsible for the boat shall facilitate such inspection.
- 1.4 An alleged breach of any of these regulations may be referred to the International Jury for a hearing. As a result of the hearing, the International Jury may instruct the Organizing Authority to withdraw accreditation and access rights from the driver or person in charge, with or without the option of substitution, either for a specified period or for the remainder of the competition. Note also, action may be taken under RRS 69.
- 1.5 The Organizing Authority may change these regulations at any time. Any changes will be posted on the official notice board and circulated to team leaders.
- 1.6 The Organizing Authority may, at its discretion, refuse to register support boats not deemed to be suitable.
- 1.7 Support boats and designated drivers shall be registered at the regatta office either before leaving the venue by water for the first time or by 18:00 on the day before the first race of the event that it is supporting, whichever is earlier.
  - a) Each boat shall be insured with valid third-party liability insurance with a minimum coverage of EUR 1.500.000 (or equivalent) per incident. The Organizing Authority is not responsible for verifying the status or validity of certificates.
  - b) Only an accredited person may be a designated driver.
  - c) The person registering the support boat shall confirm that:
    - i. a valid insurance certificate showing proof of third-party liability coverage as required by 1.7.1 has been obtained;
    - ii. each designated driver has a motorboat driving license recognized by a national authority appropriate to that boat, and
    - iii. anyone who will be using a radio has an appropriate radio operation license recognized by a national authority.
- 1.8 Support boats shall be marked with the applicable national sail letters (see RRS G1.1) clearly displayed on both sides of the boat in strongly contrasting colors at all times while afloat. The minimum height for the letters shall be 200 mm. The letters will not be provided by the Organizing Authority.
- 1.9 Support boats shall display also a special flag provided by the Organizing Authority.



## 2. SAILING VENUE

- 21 Support boats shall use the designated slipway/area for launching. Once launched, trailers shall be moved immediately to the trailer park or as otherwise directed by the Organizing Authority.
- 22 Only registered support boats will be allowed into the sailing venue.
- 23 When not in use, support boats shall be appropriately berthed at the sailing venue in the allocated areas for support boats for the entire time that these Support Boat Regulations apply.
- 24 Support boats shall not use the dinghy launching slipways or keelboat pontoons for any purpose whatsoever, including mooring, launching and retrieval, and loading and unloading of equipment.

## 3. SAFETY

- 3.1 Support boats shall carry on board:
  - a) life jackets / buoyancy aid for all passengers and the driver
  - b) first-aid kit;
  - c) device for making a sound signal;
  - d) compass;
  - e) tow rope (minimum 15m long and 10mm thick);
  - f) operational engine kill cord (also known as a safety lanyard or automatic engine immobilizer);
  - g) hand pump or bailer
  - h) knife; and
  - i) any additional safety equipment required by local maritime law.
- 3.2 It is recommended that life jackets be worn at all times when afloat.
- 3.3 When flag Y is displayed on the Signal Boat or ashore, Rule 40 applies also for coach boats.
- 3.4 **It is strongly recommended that the kill cord is used at all times when the engine is running.**
- 3.5 The maximum plated / certified passenger limits for the boat shall never be exceeded.
- 3.6 Team leaders are responsible for overseeing the safe operations of their support boats on the water, including knowledge of who is afloat and ensuring their safe return to the venue.
- 3.7 At all times, the registered driver(s) of a support boat shall comply with directions given by a race official. In particular, this includes assisting in rescue operations when requested to do so.
- 3.8 When the race committee displays flag Pennant 8 all registered support boats shall comply with any instruction given by the race committee or the Organizing Authority as assistance / rescue boats.
- 3.9 Support boats shall comply with local harbour and marina regulations, including



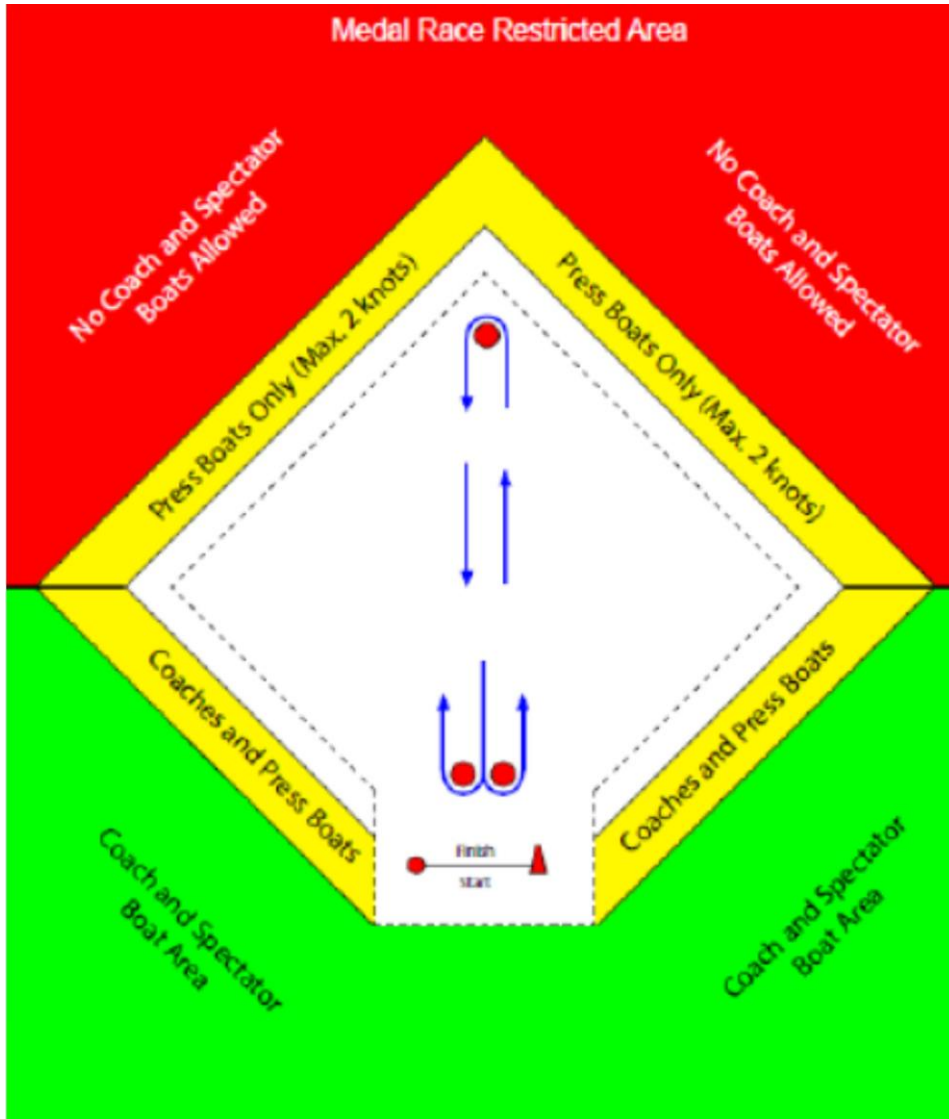
speed limits.

#### 4. GENERAL RESTRICTIONS

- 4.1 The registered driver(s) of a support boat will be responsible for the control of the boat at all times and will be held responsible for any inappropriate behaviour, dangerous actions or improper practices, or actions affecting the fairness or safety of competition.
- 4.2 Support boats shall not leave any device, piece of equipment, buoy, marker or similar item permanently in the water. Temporary use of floating objects is allowed for current measurement. These objects shall be removed as soon as the measurement has been taken.
- 4.3 Support boats should take particular care to minimize their wash when transiting the course areas.

#### 5. RACING AREA RESTRICTIONS

- 5.1 Support boats shall stay outside areas where boats are racing from the time of the preparatory signal for the first fleet to start until all boats have finished or the race committee signals a postponement, general recall or abandonment.
- 5.2 During any starting sequence, support boats shall stay at least 50 meters of the starting line and marks, from the time of the warning signal until all boats have left the starting area, or the race committee signals a postponement, general recall or abandonment.
- 5.3 Support Boats shall not be positioned:
  - a) Closer than 50 meters of any boat racing.
  - b) Within 50 meters of the starting line and marks.
  - c) Between any boat racing and the next mark of the course.
  - d) Between the inner and outer trapezoid courses.
  - e) Within 50 meters of any mark of the course while boats are in the vicinity of that mark.
  - f) Within 50 meters of the finishing line and marks while boats are finishing.
- 5.4 In addition, support boats that are motoring above 5 knots shall remain at least 150 meters from any boat racing.
- 5.5 When a race committee or jury member instructs a support boat to move further away from the course area, the support boat shall do so immediately.
- 5.6 For the Medal Race support boats with team leaders, coaches and other support personnel shall stay in areas marked with green below from the time of the preparatory signal until all boats have finished or the race committee signals a postponement, general recall or abandonment.







## ADDENDUM D: STANDARD PENALTIES

<b>2. IDENTIFICATION, CAMERAS AND ELECTRONIC EQUIPMENT</b>	
Not wearing bibs – SI 2.2	One point scoring penalty in each race of the day
Not displaying national flag – SI 2.3	One point scoring penalty in each race of the day
<b>3. CODE OF CONDUCT</b>	
Not avoiding the area where boats are racing and any official boats – SI 3.3	Three points scoring penalty in her closest sailed race.
Not avoiding the area where boats are racing and any official boats on a Course Area to which boats are not assigned - SI 3.4	Three points scoring penalty in her closest sailed race.
<b>4. COMMUNICATIONS WITH COMPETITORS</b>	
Leaving when flag D is not displayed ashore – SI 4.6, 4.7 & 25.2(g)	One point scoring penalty in her first race of the day.
<b>20. SAFETY REGULATIONS</b>	
Not Sign Out - SI 19.1	One point scoring penalty in her first race of the day
Not Sign In - SI 19.1	One point scoring penalty in her last race of the day
Not notifying the race office when not leaving the shore for the day's races – SI 19.2	One point scoring penalty in her closest sailed race.
Not notifying the race office when retiring from a race – SI 19.3	One point scoring penalty in her closest sailed race.
<b>EQUIPMENT REGULATIONS</b>	
Arriving late to the Medal Race equipment inspections - SI 25.2(f)	One point scoring penalty.



## ADDENDUM E: NATIONAL AUTHORITY PRESCRIPTIONS

---

### Rule 67 Damages

The International Jury shall make their decision based exclusively on the Racing Rules of Sailing. Any issue of liability or claim for damages arising from an incident while a boat is bound by the Racing Rules of Sailing or by the IRPCAS shall not be dealt with.

### Rule 70.5, Rule 89, Appendix N, Unappealable Juries, Race Committees.

#### a) Events with not appealable Jury.

Denial of the Right of Appeal Under Rule 70.5 (a) and (b) FIV prescribes that denial of the right of appeal under RRS 70.5(a) and (b) shall be approved by FIV before being included in the notice of race end in the sailing instructions. The request shall be made by the OA at least 60 days before the event and shall include the proposed names of all jury members. A copy of the FIV letter of approval shall be displayed on the official notice board.

For the events where the Organizing Authority is the FIV, not appealable juries can be appointed by the FIV according to RRS 89.2(b) and 70.5(b), without any request by affiliated clubs.

#### b) Appointment of International Juries

Except for World Sailing events or when international juries are appointed by World Sailing under rule 89.2(c), international juries for the events held in the waters within FIV jurisdiction, shall be appointed by the FIV prior to the issue of the notice of race. Requests for international juries shall be made at least 60 days before an event, and shall include proposed jury members. A copy of the FIV's letter of appointment shall be displayed on the official notice board.

#### d) Appointment of Race Officers

The appointment of the event PRO and ROs, excluding appointment made by World Sailing according to RRS 89.2(c), shall be made by FIV. Class Technical Delegate (CTD) and Class Course Representatives (CCR) nominated by the international classes recognized by World Sailing may provide advice with regard to the specific knowledge of the class (wind speed limit, course length, course changes, abandonment, etc.), but the final decisions will be the sole responsibility of the PRO and RO appointed by FIV. A copy of the FIV's letter of appointment shall be displayed on the official notice board.

### Rule 88.2 Changes to the Racing Rules

Except for events organised by World Sailing, FIV prescribes that, for events held in the waters within FIV jurisdiction, notices of race and sailing instructions shall not change a prescription of the FIV, unless so authorised in writing by the FIV.

### Rule 89.1

FIV prescribes that in all cases foreseen in RRS 89.1, points (d) to (h), for events held within Italian waters, his approval is mandatory.

### Rules 89.2(c), 91(a) and (c), 92

FIV prescribes that for the race Officials appointment his approval is needed.

### Appendix P

Sailing instructions may change the penalties foreseen in Appendix P (for instance always using RRS P2.1) but the change shall always be preventively approved by FIV.